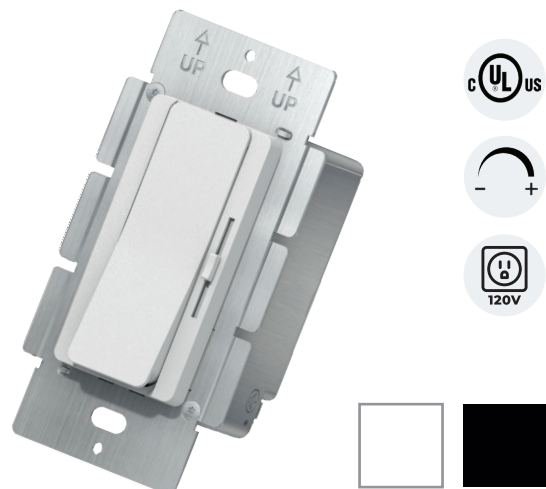


DimDrive

2 in 1 Dimmer + Driver

The DimDrive is a compact 2-in-1 unit combining a constant voltage LED driver and dimmer. It provides smooth, flicker-free dimming (0.3%–100%) for static white or single-color LED lighting, with built-in protection against short circuits, overloads, and overheating. It is ideal for static under-cabinet, cove, stair, display, and mirror backlighting applications.



FEATURES

- 120V AC Input, Constant Voltage Output
- Active Power Factor Correction (PFC)
- Built-in Protection: Short, Overload, Temp
- Fine-Tune Adjustable Output Voltage
- Built-in Dimmer with On/Off Switch
- Works with 3-Way Circuits
- Fixes dimmer/driver compatibility issues
- Dimming Range: 0.3%–100%
- 5-Year Limited Warranty

APPLICATION

- Under-cabinet kitchen lighting
- Cove and ceiling perimeter lighting
- Toe-kick and stair accent lighting
- Backlighting for mirrors or TVs
- Shelf and display case illumination
- Closet or wardrobe lighting

SPECIFICATIONS			
Product Code		DD-2460-S-YY	DD-24100-S-WH
Electrical	Input Voltage	120V AC	
	Output Voltage	24V DC	
Specs	Max. Load	60W, 2.5A	100W, 4.17A
	Power Factor	>0.9 @ 120VAC 60Hz max load	
	Efficiency	≥91% @ 120VAC max load	
	Dimmable	Yes	
	Protections	Short circuit/ Over load/ Over temperature	
	Mounting	Single-Gang Box	
	Connection Type	Hardwire	
Warranty		5 years limited warranty	
Approvals		cULus, FCC, RoHS	

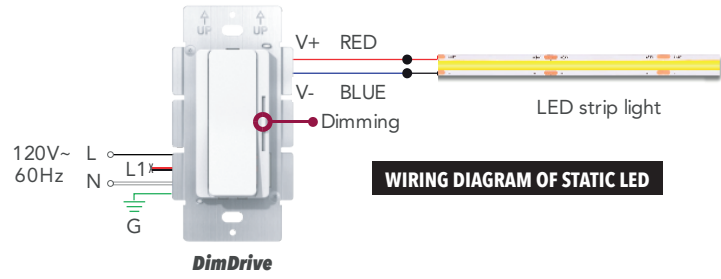
PRODUCT CODES

DD - 24XX - S - YY

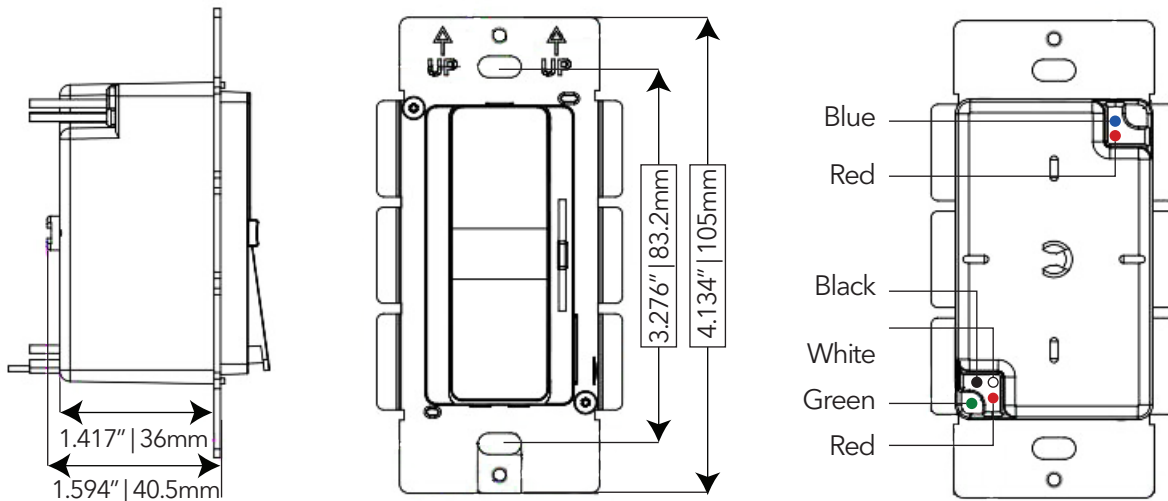
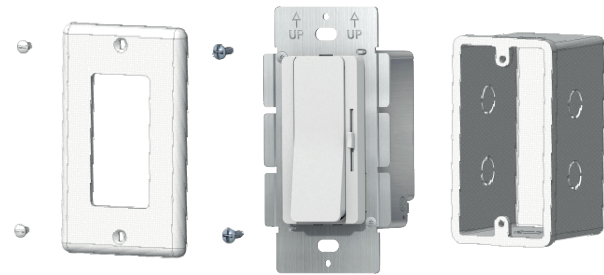
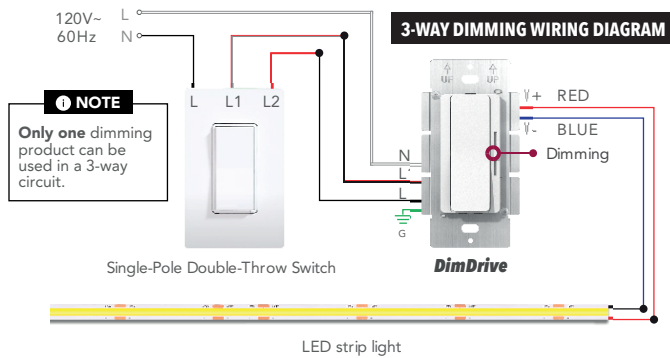
DimDrive **WATTAGE**
60: 60W
100: 100W

COLOR
WH: White
BK: Black, Special Order

DIAGRAM



DIAGRAM



The Driver Is Inside

DimDrive is all you need between your line voltage and low voltage LED lighting. The integrated driver converts 120VAC to 24VDC and it fits in a standard electrical box.

No Remote Driver Required

