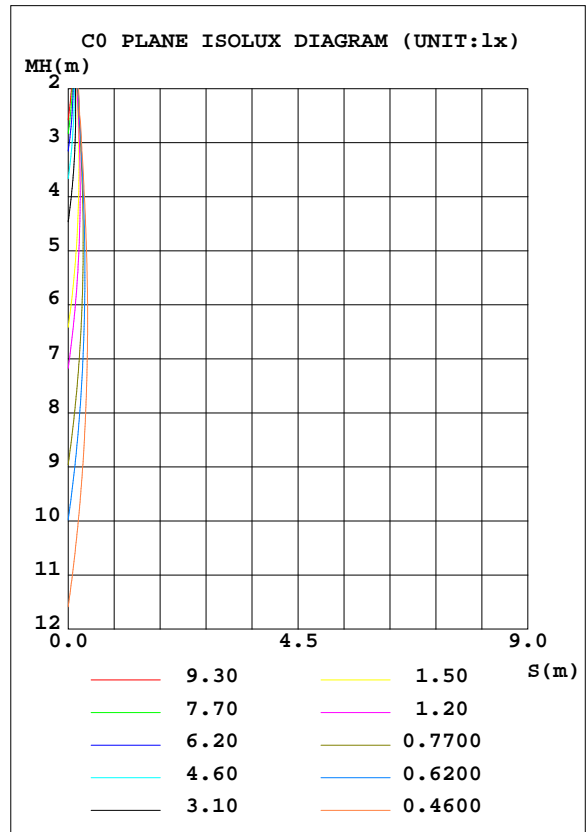
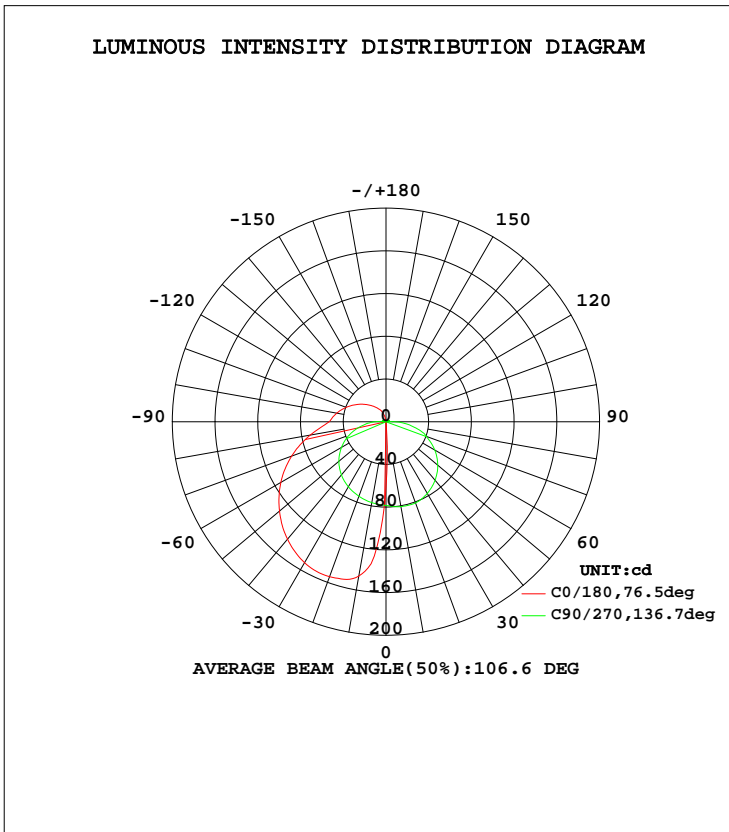


LUMINAIRE PHOTOMETRIC TEST REPORT

Test:U:120.5V I:0.1927A P:11.08W PF:0.4772 Lamp Flux:384.922x1 lm		
NAME: MIX-03-14-2.5M 2700K	TYPE:	WEIGHT:
SPEC.:	DIM.:	SERIAL No.:
MFR.:	SUR.:	PROTECTION ANGLE:

DATA OF LAMP		PHOTOMETRIC DATA Eff: 34.73 lm/W			
MODEL	MIX-03-14-2.5M	I _{max} (cd)	154.8	S/MH(C0/180)	2.38
NOMINAL POWER(W)	120	LOR(%)	100.0	S/MH(C90/270)	1.34
RATED VOLTAGE(V)	120	TOTAL FLUX(lm)	384.92	η UP, DN(C0-180)	1.3, 21.0
NOMINAL FLUX(lm)	384.922	CIE CLASS	SEMI-D.	η UP, DN(C180-360)	13.7, 64.1
LAMPS INSIDE	1	η up(%)	14.9	CIBSE SHR NOM	0.75
TEST VOLTAGE(V)	120	η down(%)	85.1	CIBSE SHR MAX	0.90



C Range: 0 - 360DEG
 C Interval: 90.0DEG
 Test Speed: HIGH
 Temperature:25.3DEG
 Operators:
 Test Date:2024-10-12

γ Range: 0 - 180DEG
 γ Interval: 1.0DEG
 Test System:EVERFINE GO-2000A_V1 SYSTEM V2.0.285
 Humidity:65.0%
 Test Distance:7.690m [K=1.0000]
 Remarks:

ZONAL FLUX DIAGRAM

ZONAL FLUX DIAGRAM:

γ	C0	C90	C180	C270				γ	Φ zone	Φ total	Φ lum, lamp
10	0.6189	80.68	146.7	76.97				0- 10	7.039	7.039	1.83,1.83
20	0.4997	80.87	154.5	74.25				10- 20	21.93	28.97	7.53,7.53
30	0.4882	77.49	152.4	70.45				20- 30	35.44	64.41	16.7,16.7
40	0.4881	71.56	143.5	65.00				30- 40	45.70	110.1	28.6,28.6
50	0.4996	63.30	130.1	57.62				40- 50	51.57	161.7	42,42
60	0.5457	52.70	113.7	48.19				50- 60	52.40	214.1	55.6,55.6
70	0.6149	40.30	94.02	36.81				60- 70	48.02	262.1	68.1,68.1
80	0.6687	25.28	71.96	23.47				70- 80	38.97	301.1	78.2,78.2
90	0.7302	8.108	53.32	10.53				80- 90	26.39	327.5	85.1,85.1
100	0.8263	3.117	46.86	3.276				90-100	16.07	343.5	89.2,89.2
110	0.9416	2.705	39.65	2.930				100-110	13.34	356.9	92.7,92.7
120	1.011	2.375	32.32	1.487				110-120	10.29	367.2	95.4,95.4
130	0.9916	1.617	25.40	0.9648				120-130	7.443	374.6	97.3,97.3
140	0.9762	0.8993	19.27	0.8686				130-140	4.930	379.5	98.6,98.6
150	1.022	0.7763	14.14	0.7802				140-150	3.047	382.6	99.4,99.4
160	0.8996	0.7122	9.239	0.7211				150-160	1.676	384.2	99.8,99.8
170	0.7343	0.6534	1.910	0.6803				160-170	0.6030	384.9	100,100
180	0.6956	0.6418	0.6803	0.6534				170-180	0.0712	384.9	100,100
DEG	LUMINOUS INTENSITY:cd								UNIT:lm		

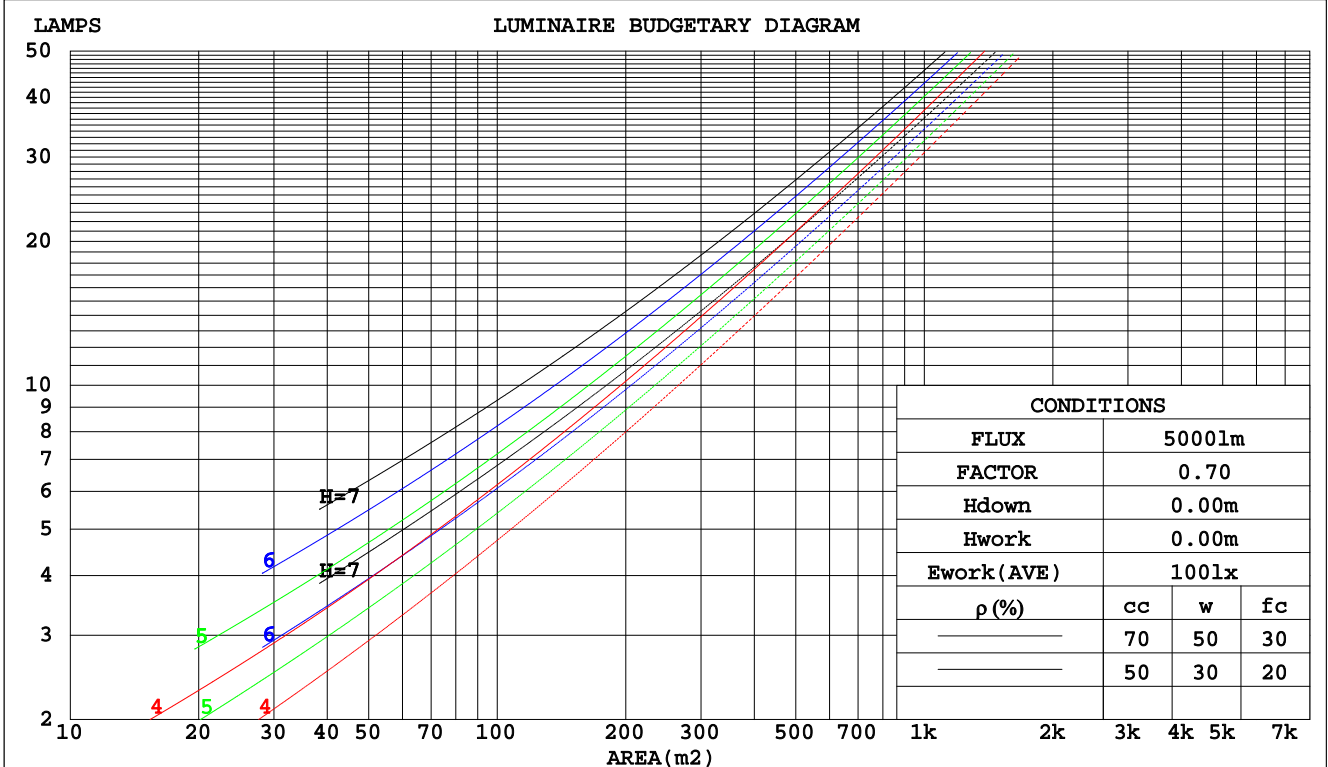
C Range: 0 - 360DEG
 C Interval: 90.0DEG
 Test Speed: HIGH
 Temperature:25.3DEG
 Operators:
 Test Date:2024-10-12

γ Range: 0 - 180DEG
 γ Interval: 1.0DEG
 Test System:EVERFINE GO-2000A_V1 SYSTEM V2.0.285
 Humidity:65.0%
 Test Distance:7.690m [K=1.0000]
 Remarks:

CU AND LUMINAIRE BUDGETARY ESTIMATE DIAGRAM

Test:U:120.5V I:0.1927A P:11.08W PF:0.4772 Lamp Flux:384.922x1 lm		
NAME: MIX-03-14-2.5M 2700K	TYPE:	WEIGHT:
SPEC.:	DIM.:	SERIAL No.:
MFR.:	SUR.:	PROTECTION ANGLE:

pcc	80%			70%			50%			30%			10%			0
	50%	30%	10%	50%	30%	10%	50%	30%	10%	50%	30%	10%	50%	30%	10%	0
pw																
pfc	20%			20%			20%			20%			20%			0
RCR	RCR:Room Cavity Ratio						Coefficients of Utilization(CU)									
0.0	1.15	1.15	1.15	1.11	1.11	1.11	1.03	1.03	1.03	.95	.95	.95	.88	.88	.88	.85
1.0	.96	.91	.86	.93	.88	.83	.85	.82	.78	.79	.76	.73	.73	.70	.68	.65
2.0	.82	.74	.68	.79	.72	.66	.73	.67	.62	.67	.62	.58	.62	.58	.55	.51
3.0	.71	.62	.55	.68	.60	.53	.63	.56	.50	.58	.52	.47	.54	.49	.45	.42
4.0	.62	.53	.45	.60	.51	.44	.55	.48	.42	.51	.45	.40	.47	.42	.38	.35
5.0	.55	.45	.38	.53	.44	.37	.49	.41	.36	.46	.39	.34	.42	.37	.32	.29
6.0	.49	.40	.33	.47	.39	.32	.44	.36	.31	.41	.34	.29	.38	.32	.28	.25
7.0	.44	.35	.29	.43	.34	.28	.40	.32	.27	.37	.30	.26	.34	.29	.24	.22
8.0	.40	.31	.25	.39	.30	.25	.36	.29	.24	.34	.27	.23	.31	.26	.22	.19
9.0	.37	.28	.22	.35	.27	.22	.33	.26	.21	.31	.25	.20	.29	.23	.19	.17
10.0	.34	.25	.20	.33	.25	.20	.31	.24	.19	.29	.22	.18	.27	.21	.17	.15



C Range: 0 - 360DEG
 C Interval: 90.0DEG
 Test Speed: HIGH
 Temperature: 25.3DEG
 Operators:
 Test Date: 2024-10-12

γ Range: 0 - 180DEG
 γ Interval: 1.0DEG
 Test System: EVERFINE GO-2000A_V1 SYSTEM V2.0.285
 Humidity: 65.0%
 Test Distance: 7.690m [K=1.0000]
 Remarks:

WEC AND CCEC

Test:U:120.5V I:0.1927A P:11.08W PF:0.4772 Lamp Flux:384.922x1 lm		
NAME: MIX-03-14-2.5M 2700K	TYPE:	WEIGHT:
SPEC.:	DIM.:	SERIAL No.:
MFR.:	SUR.:	PROTECTION ANGLE:

ρcc	80%			70%			50%			30%			10%			0
ρw	50%	30%	10%	50%	30%	10%	50%	30%	10%	50%	30%	10%	50%	30%	10%	0
ρfc	20%			20%			20%			20%			20%			0
RCR	RCR:Room Cavity Ratio						Wall Exitance Coefficients(WEC)									
0.0																
1.0	.385	.219	.069	.374	.213	.068	.351	.202	.064	.331	.191	.061	.312	.181	.058	
2.0	.337	.185	.057	.326	.180	.055	.306	.170	.053	.288	.161	.051	.271	.153	.048	
3.0	.300	.160	.048	.291	.156	.047	.273	.148	.045	.256	.140	.043	.240	.133	.041	
4.0	.271	.141	.041	.262	.137	.041	.246	.130	.039	.230	.124	.037	.216	.118	.036	
5.0	.246	.125	.036	.238	.122	.036	.223	.116	.034	.210	.111	.033	.197	.105	.032	
6.0	.225	.113	.032	.218	.110	.032	.205	.105	.031	.192	.100	.029	.181	.095	.028	
7.0	.208	.103	.029	.201	.100	.029	.189	.096	.028	.178	.091	.026	.167	.087	.025	
8.0	.193	.094	.026	.187	.092	.026	.176	.088	.025	.165	.084	.024	.155	.080	.023	
9.0	.179	.087	.024	.174	.085	.024	.164	.081	.023	.154	.077	.022	.145	.074	.021	
10.0	.168	.080	.022	.163	.079	.022	.153	.075	.021	.144	.072	.020	.136	.068	.020	

ρcc	80%			70%			50%			30%			10%			0
ρw	50%	30%	10%	50%	30%	10%	50%	30%	10%	50%	30%	10%	50%	30%	10%	0
ρfc	20%			20%			20%			20%			20%			0
RCR	RCR:Room Cavity Ratio						Ceiling Cavity Exitance Coefficients(CCEC)									
0.0	.304	.304	.304	.260	.260	.260	.177	.177	.177	.102	.102	.102	.033	.033	.033	
1.0	.300	.270	.243	.257	.232	.209	.176	.160	.145	.101	.092	.084	.032	.030	.027	
2.0	.294	.247	.208	.252	.213	.180	.172	.147	.125	.099	.086	.074	.032	.028	.024	
3.0	.286	.231	.186	.246	.199	.161	.169	.138	.113	.097	.081	.067	.031	.026	.022	
4.0	.279	.218	.172	.239	.188	.149	.164	.131	.105	.095	.077	.062	.031	.025	.020	
5.0	.271	.208	.162	.233	.180	.141	.160	.126	.099	.093	.074	.059	.030	.024	.019	
6.0	.264	.200	.155	.227	.173	.135	.156	.121	.095	.091	.071	.057	.029	.023	.019	
7.0	.256	.194	.150	.221	.168	.130	.152	.118	.092	.089	.069	.055	.029	.023	.018	
8.0	.250	.188	.146	.215	.163	.127	.149	.115	.090	.087	.068	.054	.028	.022	.018	
9.0	.243	.183	.143	.210	.159	.124	.145	.112	.088	.085	.066	.053	.027	.022	.017	
10.0	.237	.179	.140	.205	.155	.122	.142	.109	.087	.083	.065	.052	.027	.021	.017	

C Range: 0 - 360DEG
 C Interval: 90.0DEG
 Test Speed: HIGH
 Temperature:25.3DEG
 Operators:
 Test Date:2024-10-12

γ Range: 0 - 180DEG
 γ Interval: 1.0DEG
 Test System:EVERFINE GO-2000A_V1 SYSTEM V2.0.285
 Humidity:65.0%
 Test Distance:7.690m [K=1.0000]
 Remarks:

UGR(Unified Glare Rating) Table

Test:U:120.5V I:0.1927A P:11.08W PF:0.4772 Lamp Flux:384.922x1 lm										
NAME: MIX-03-14-2.5M 2700K					TYPE:			WEIGHT:		
SPEC.:					DIM.:			SERIAL No.:		
MFR.:					SUR.:			PROTECTION ANGLE:		
ceiling/cavity	0.7	0.7	0.5	0.5	0.3	0.7	0.7	0.5	0.5	0.3
walls	0.5	0.3	0.5	0.3	0.3	0.5	0.3	0.5	0.3	0.3
working plane	0.2	0.2	0.2	0.2	0.2	0.2	0.2	0.2	0.2	0.2
Room dimensions	Viewed crosswise					Viewed endwise				
x = 2H y = 2H	2.4	3.8	2.9	4.3	4.8	10.6	12.1	11.1	12.5	13.0
3H	3.2	4.6	3.7	5.0	5.6	13.1	14.4	13.6	14.9	15.4
4H	3.5	4.8	4.1	5.3	5.9	14.3	15.6	14.8	16.1	16.7
6H	3.7	4.9	4.3	5.4	6.0	15.4	16.6	16.0	17.2	17.8
8H	3.8	4.9	4.3	5.5	6.1	16.0	17.1	16.5	17.7	18.3
12H	3.8	4.9	4.4	5.5	6.1	16.5	17.6	17.1	18.2	18.8
4H 2H	5.4	6.6	5.9	7.1	7.7	10.7	12.0	11.3	12.5	13.1
3H	6.6	7.7	7.2	8.3	8.9	13.4	14.5	14.0	15.1	15.7
4H	7.2	8.2	7.7	8.7	9.4	14.9	15.9	15.5	16.5	17.1
6H	7.5	8.4	8.1	9.0	9.7	16.2	17.1	16.8	17.7	18.4
8H	7.6	8.5	8.3	9.1	9.8	16.9	17.7	17.5	18.4	19.1
12H	7.7	8.5	8.3	9.1	9.8	17.6	18.4	18.2	19.0	19.7
8H 4H	9.0	9.8	9.6	10.4	11.1	15.0	15.8	15.6	16.4	17.1
6H	9.7	10.4	10.4	11.1	11.8	16.5	17.2	17.2	17.9	18.6
8H	10.0	10.7	10.7	11.3	12.1	17.4	18.0	18.0	18.7	19.4
12H	10.2	10.8	10.9	11.5	12.3	18.2	18.8	18.9	19.5	20.3
12H 4H	9.4	10.2	10.0	10.8	11.5	14.9	15.7	15.6	16.4	17.1
6H	10.4	11.0	11.0	11.7	12.5	16.5	17.2	17.2	17.8	18.6
8H	10.9	11.4	11.5	12.1	12.9	17.4	18.0	18.1	18.7	19.5
Variations with the observer position at spacings:										
S = 1.0H	+ 0.1 / - 0.1					+ 0.1 / - 0.1				
1.5H	+ 0.2 / - 0.3					+ 0.2 / - 0.2				
2.0H	+ 0.4 / - 0.6					+ 0.3 / - 0.4				

CIE Pub.117 Corrected 384.9 lm Total Lamp Luminous Flux. (8log(F/F0) = -3.3)

C Range: 0 - 360DEG
 C Interval: 90.0DEG
 Test Speed: HIGH
 Temperature: 25.3DEG
 Operators:
 Test Date: 2024-10-12

γ Range: 0 - 180DEG
 γ Interval: 1.0DEG
 Test System: EVERFINE GO-2000A_V1 SYSTEM V2.0.285
 Humidity: 65.0%
 Test Distance: 7.690m [K=1.0000]
 Remarks:

UTILIZATION FACTORS TABLE

Test:U:120.5V I:0.1927A P:11.08W PF:0.4772 Lamp Flux:384.922x1 lm		
NAME: MIX-03-14-2.5M 2700K	TYPE:	WEIGHT:
SPEC.:	DIM.:	SERIAL No.:
MFR.:	SUR.:	PROTECTION ANGLE:

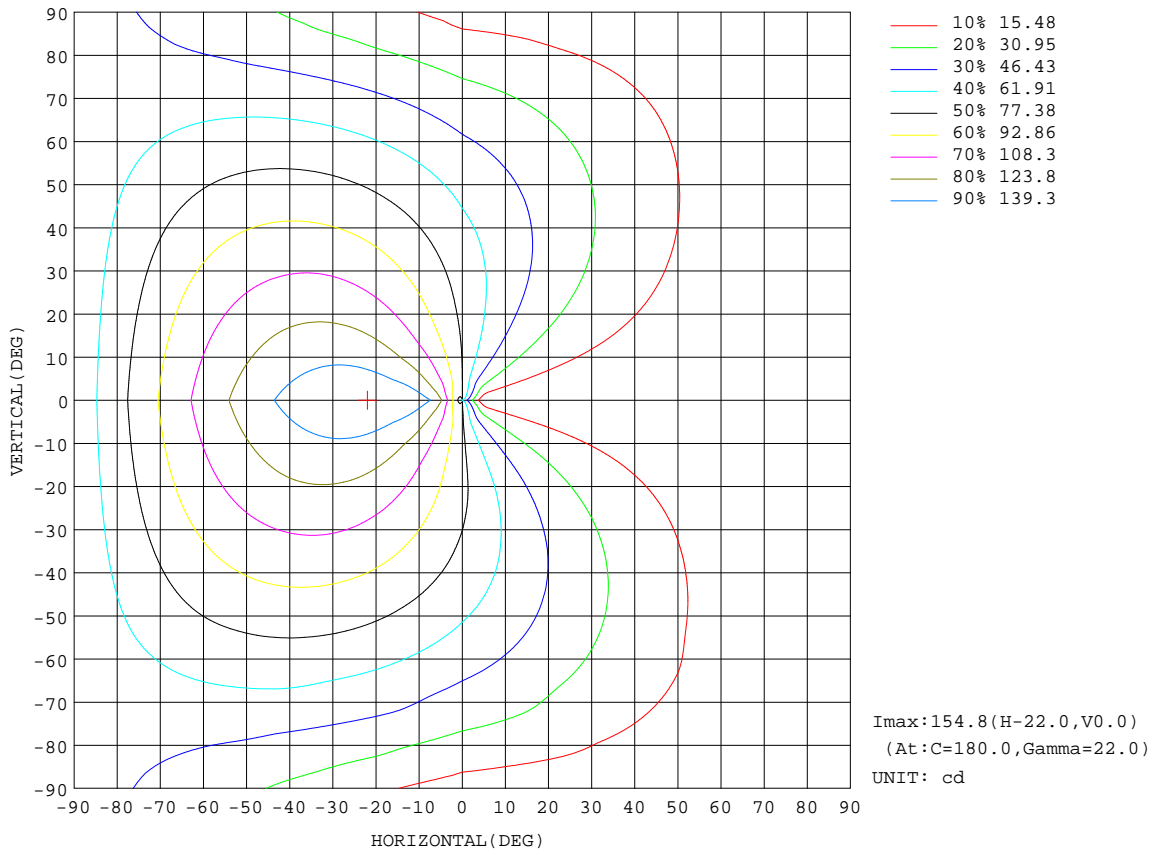
REFLECTANCE										
Ceiling	0.8	0.8	0.8	0.7	0.7	0.7	0.5	0.5	0.5	0
Walls	0.7	0.5	0.3	0.7	0.5	0.3	0.7	0.5	0.3	0
Working plane	0.2	0.2	0.2	0.2	0.2	0.2	0.2	0.2	0.2	0
ROOM INDEX	UTILIZATION FACTORS(PERCENT) $k(RI) \times RCR = 5$									
k = 0.60	48	35	28	47	35	28	45	34	27	20
0.80	57	44	36	56	43	36	53	42	35	27
1.00	65	52	44	63	51	43	60	52	42	33
1.25	72	60	51	70	58	50	66	56	49	39
1.50	77	65	57	75	64	56	70	61	54	43
2.00	85	74	66	82	72	64	76	68	62	50
2.50	89	79	71	86	77	70	80	73	67	54
3.00	93	84	77	90	81	75	83	77	71	58
4.00	98	90	84	94	87	81	87	82	77	63
5.00	101	94	88	97	91	86	90	85	81	67
ROOM INDEX	UF(total)									Direct
According to DIN EN 13032-2 2004			Suspended				SHRNOM = 1.25			

C Range: 0 - 360DEG
 C Interval: 90.0DEG
 Test Speed: HIGH
 Temperature:25.3DEG
 Operators:
 Test Date:2024-10-12

γ Range: 0 - 180DEG
 γ Interval: 1.0DEG
 Test System:EVERFINE GO-2000A_V1 SYSTEM V2.0.285
 Humidity:65.0%
 Test Distance:7.690m [K=1.0000]
 Remarks:

ISOCANDELA DIAGRAM

Test:U:120.5V I:0.1927A P:11.08W PF:0.4772 Lamp Flux:384.922x1 lm		
NAME: MIX-03-14-2.5M 2700K	TYPE:	WEIGHT:
SPEC.:	DIM.:	SERIAL No.:
MFR.:	SUR.:	PROTECTION ANGLE:

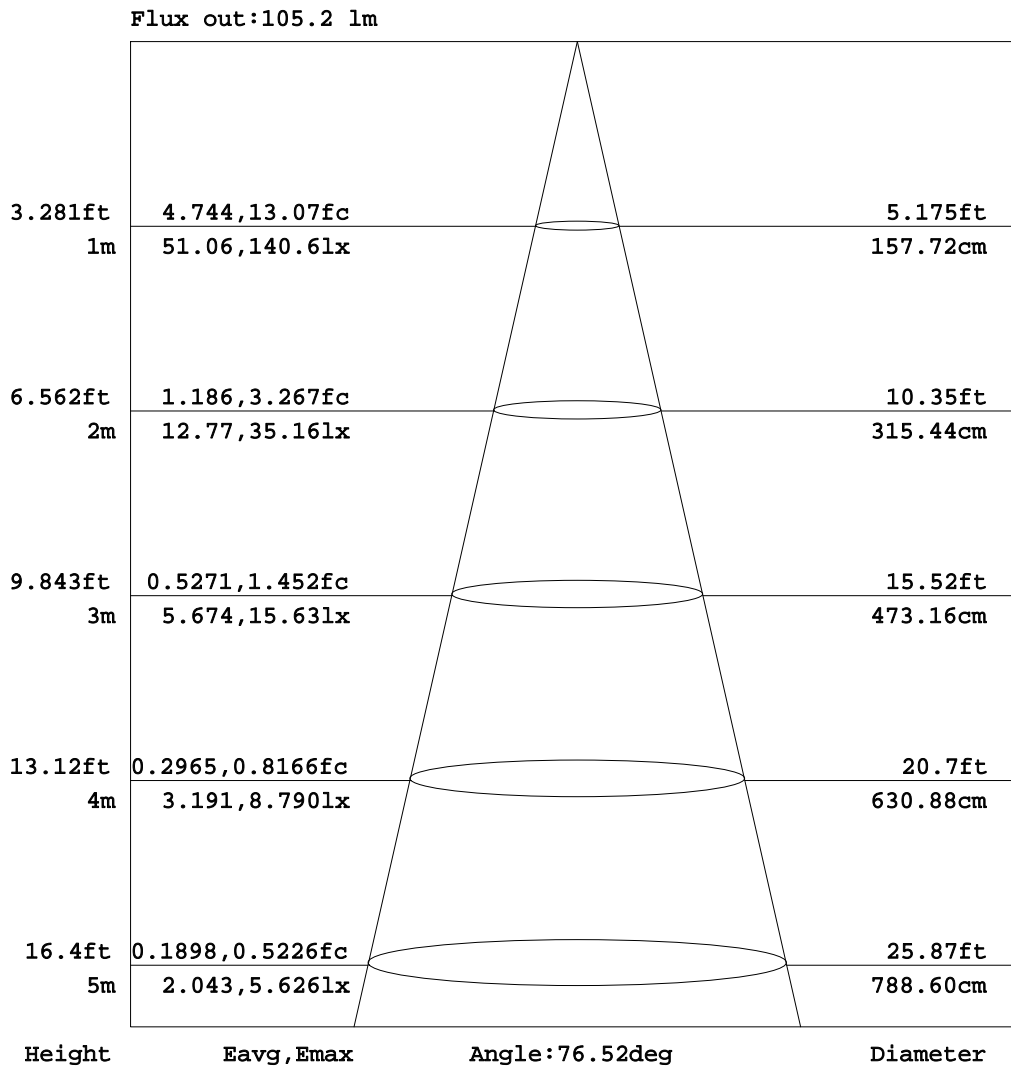


C Range: 0 - 360DEG
 C Interval: 90.0DEG
 Test Speed: HIGH
 Temperature: 25.3DEG
 Operators:
 Test Date: 2024-10-12

γ Range: 0 - 180DEG
 γ Interval: 1.0DEG
 Test System: EVERFINE GO-2000A_V1 SYSTEM V2.0.285
 Humidity: 65.0%
 Test Distance: 7.690m [K=1.0000]
 Remarks:

AAI Figure

Test:U:120.5V I:0.1927A P:11.08W PF:0.4772 Lamp Flux:384.922x1 lm		
NAME: MIX-03-14-2.5M 2700K	TYPE:	WEIGHT:
SPEC.:	DIM.:	SERIAL No.:
MFR.:	SUR.:	PROTECTION ANGLE:



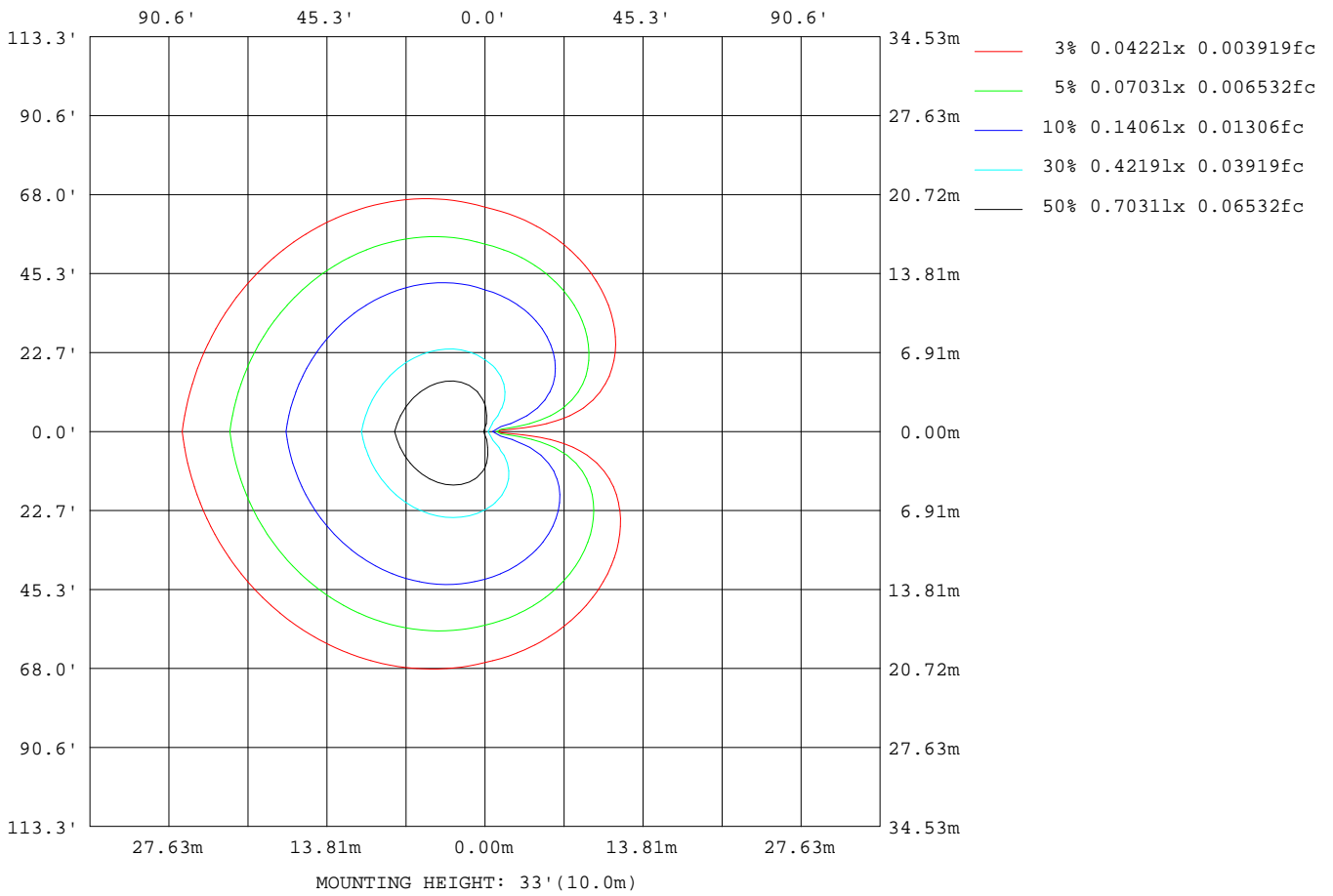
Note:The Curves indicate the illuminated area and the average illumination when the luminaire is at different distance.

C Range: 0 - 360DEG
 C Interval: 90.0DEG
 Test Speed: HIGH
 Temperature:25.3DEG
 Operators:
 Test Date:2024-10-12

γ Range: 0 - 180DEG
 γ Interval: 1.0DEG
 Test System:EVERFINE GO-2000A_V1 SYSTEM V2.0.285
 Humidity:65.0%
 Test Distance:7.690m [K=1.0000]
 Remarks:

ISOLUX DIAGRAM

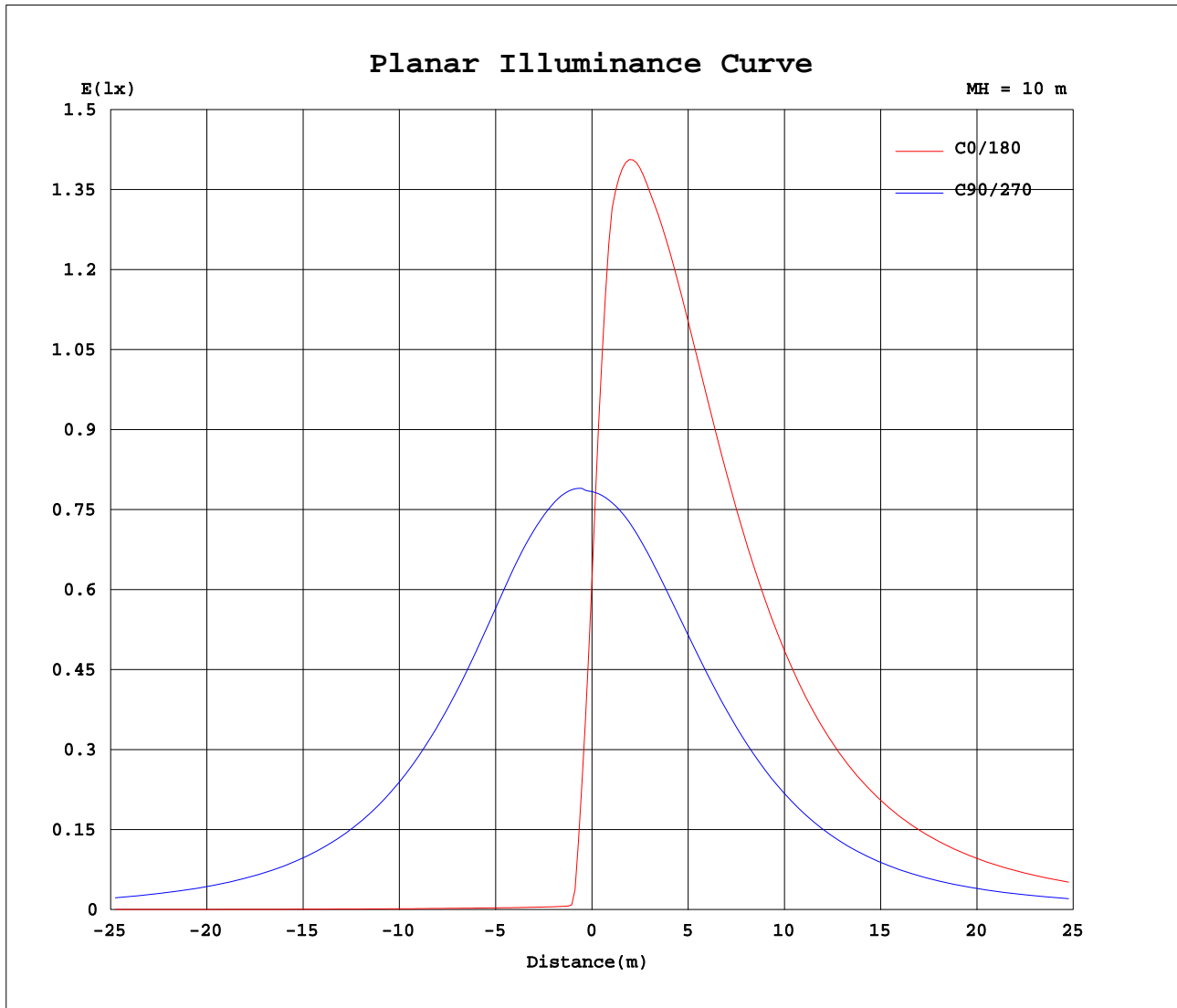
Test:U:120.5V I:0.1927A P:11.08W PF:0.4772 Lamp Flux:384.922x1 lm		
NAME: MIX-03-14-2.5M 2700K	TYPE:	WEIGHT:
SPEC.:	DIM.:	SERIAL No.:
MFR.:	SUR.:	PROTECTION ANGLE:



C Range: 0 - 360DEG
 C Interval: 90.0DEG
 Test Speed: HIGH
 Temperature: 25.3DEG
 Operators:
 Test Date: 2024-10-12

γ Range: 0 - 180DEG
 γ Interval: 1.0DEG
 Test System: EVERFINE GO-2000A_V1 SYSTEM V2.0.285
 Humidity: 65.0%
 Test Distance: 7.690m [K=1.0000]
 Remarks:

Planar Illuminance Curve



C Range: 0 - 360DEG
 C Interval: 90.0DEG
 Test Speed: HIGH
 Temperature: 25.3DEG
 Operators:
 Test Date: 2024-10-12

γ Range: 0 - 180DEG
 γ Interval: 1.0DEG
 Test System: EVERFINE GO-2000A_V1 SYSTEM V2.0.285
 Humidity: 65.0%
 Test Distance: 7.690m [K=1.0000]
 Remarks:

LUMINOUS DISTRIBUTION INTENSITY DATA

Test:U:120.5V I:0.1927A P:11.08W PF:0.4772 Lamp Flux:384.922x1 lm		
NAME: MIX-03-14-2.5M 2700K	TYPE:	WEIGHT:
SPEC.:	DIM.:	SERIAL No.:
MFR.:	SUR.:	PROTECTION ANGLE:

Table--1

UNIT: cd

C(DEG) γ (DEG)	0	90	180	270															
0	61.8	78.4	61.8	78.4															
5	3.78	79.8	126	77.7															
10	0.62	80.7	147	77.0															
15	0.54	81.0	153	75.8															
20	0.50	80.9	154	74.2															
25	0.49	79.6	155	72.5															
30	0.49	77.5	152	70.4															
35	0.49	74.7	149	67.9															
40	0.49	71.6	144	65.0															
45	0.49	67.7	137	61.6															
50	0.50	63.3	130	57.6															
55	0.51	58.3	122	53.1															
60	0.55	52.7	114	48.2															
65	0.58	46.5	104	42.7															
70	0.61	40.3	94.0	36.8															
75	0.64	33.8	83.2	30.4															
80	0.67	25.3	72.0	23.5															
85	0.70	17.4	61.3	17.1															
90	0.73	8.11	53.3	10.5															
95	0.77	1.92	50.1	2.91															
100	0.83	3.12	46.9	3.28															
105	0.89	3.07	43.3	2.97															
110	0.94	2.71	39.6	2.93															
115	0.98	2.27	36.0	2.15															
120	1.01	2.38	32.3	1.49															
125	1.01	2.20	28.8	1.07															
130	0.99	1.62	25.4	0.96															
135	0.97	1.18	22.2	0.92															
140	0.98	0.90	19.3	0.87															
145	1.04	0.83	16.6	0.82															
150	1.02	0.78	14.1	0.78															
155	0.99	0.74	12.0	0.75															
160	0.90	0.71	9.24	0.72															
165	0.80	0.70	6.03	0.70															
170	0.73	0.65	1.91	0.68															
175	0.70	0.64	0.57	0.67															
180	0.70	0.64	0.68	0.65															

C Range: 0 - 360DEG
 C Interval: 90.0DEG
 Test Speed: HIGH
 Temperature:25.3DEG
 Operators:
 Test Date:2024-10-12

γ Range: 0 - 180DEG
 γ Interval: 1.0DEG
 Test System:EVERFINE GO-2000A_V1 SYSTEM V2.0.285
 Humidity:65.0%
 Test Distance:7.690m [K=1.0000]
 Remarks: