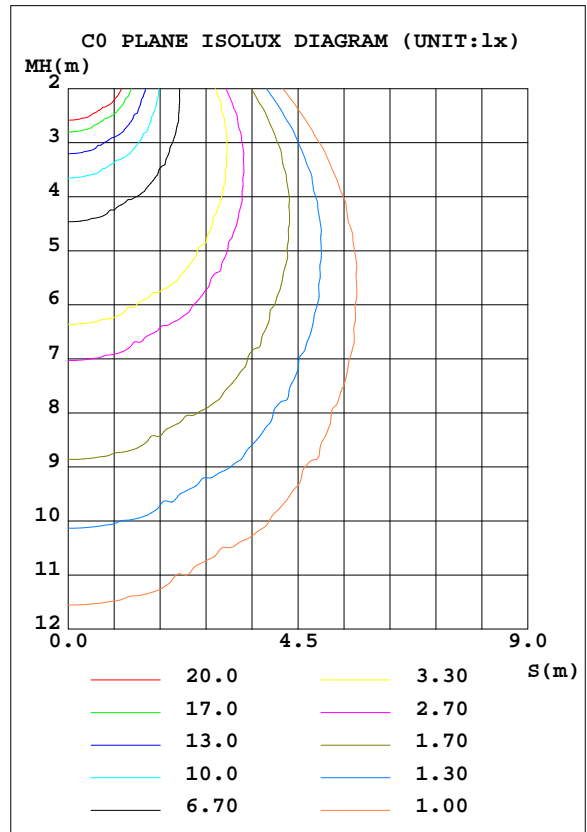
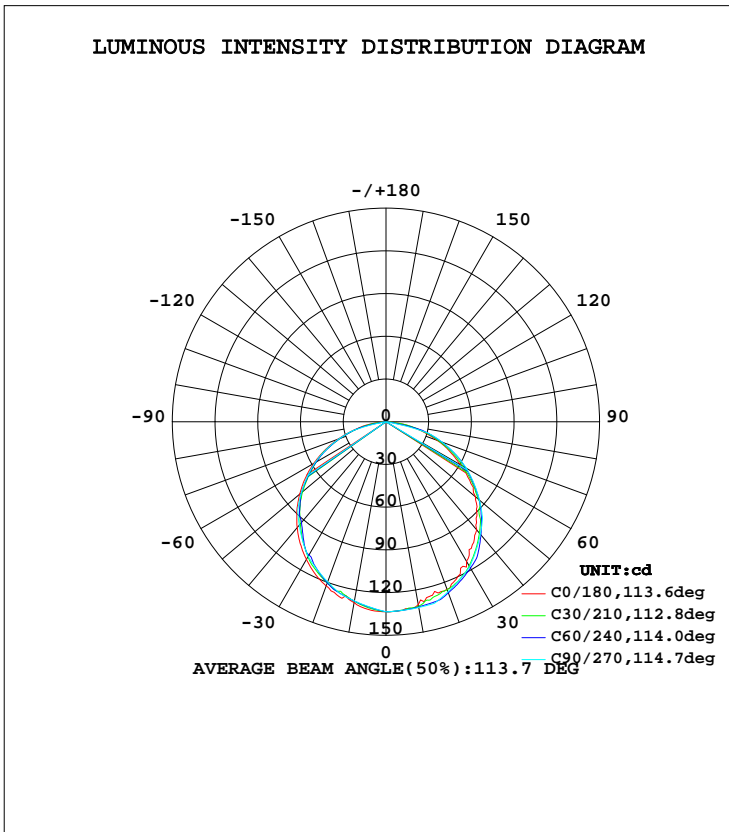


LUMINAIRE PHOTOMETRIC TEST REPORT

Test:U:120.6V I:0.1809A P:10.30W PF:0.4718 Lamp Flux:381.353x1 lm		
NAME: MIX-01-16.6-2.5M 2700K	TYPE:	WEIGHT:
SPEC.:	DIM.:	SERIAL No.:
MFR.:	SUR.:	PROTECTION ANGLE:

DATA OF LAMP		PHOTOMETRIC DATA Eff: 37.04 lm/W			
MODEL	MIX-01-16.6-2.5M	Imax(cd)	133.5	S/MH(C0/180)	1.25
NOMINAL POWER(W)	120	LOR(%)	100.0	S/MH(C90/270)	1.22
RATED VOLTAGE(V)	120	TOTAL FLUX(lm)	381.35	η UP, DN(C0-180)	0.0, 52.0
NOMINAL FLUX(lm)	381.353	CIE CLASS	DIRECT	η UP, DN(C180-360)	0.0, 48.0
LAMPS INSIDE	1	η up(%)	0.0	CIBSE SHR NOM	1.25
TEST VOLTAGE(V)	120	η down(%)	100.0	CIBSE SHR MAX	1.35



C Range: 0 - 360DEG
 C Interval: 5.0DEG
 Test Speed: HIGH
 Temperature:25.3DEG
 Operators:
 Test Date:2024-10-12

γ Range: 0 - 90DEG
 γ Interval: 0.5DEG
 Test System:EVERFINE GO-2000A_V1 SYSTEM V2.0.285
 Humidity:65.0%
 Test Distance:7.690m [K=1.0000]
 Remarks:

ZONAL FLUX DIAGRAM

ZONAL FLUX DIAGRAM:

γ	C0	C45	C90	C135	C180	C225	C270	C315	γ	Φ zone	Φ total	lum, lamp
5	133.0	132.8	133.0	132.7	132.6	131.1	130.6	131.2	0- 5	3.170	3.170	0.83,0.83
10	130.5	131.7	132.4	131.1	129.0	127.9	127.8	128.4	5- 10	9.366	12.54	3.29,3.29
15	126.1	129.4	131.9	128.9	127.2	124.3	124.9	124.5	10- 15	15.21	27.74	7.28,7.28
20	125.2	127.7	127.1	127.1	122.8	121.0	119.7	121.3	15- 20	20.65	48.40	12.7,12.7
25	119.7	123.0	122.4	121.5	117.9	114.7	114.5	115.7	20- 25	25.40	73.80	19.4,19.4
30	113.2	117.3	117.6	116.3	111.7	107.8	109.3	109.7	25- 30	29.26	103.1	27,27
35	105.6	111.3	110.3	110.2	104.8	102.2	102.1	103.8	30- 35	32.22	135.3	35.5,35.5
40	99.15	104.5	103.1	103.2	96.99	94.22	94.84	96.64	35- 40	34.12	169.4	44.4,44.4
45	90.24	94.62	95.87	94.13	88.55	85.33	87.60	87.50	40- 45	34.93	204.3	53.6,53.6
50	82.08	84.66	85.64	84.98	79.14	76.44	77.61	78.42	45- 50	34.63	238.9	62.7,62.7
55	71.87	74.55	75.41	76.04	69.17	68.15	67.62	70.15	50- 55	33.07	272.0	71.3,71.3
60	60.49	62.89	65.18	64.73	58.58	56.57	57.62	58.96	55- 60	30.44	302.5	79.3,79.3
65	49.48	52.44	53.59	53.68	47.40	45.50	46.35	47.83	60- 65	26.80	329.3	86.3,86.3
70	38.19	40.93	42.01	42.31	35.92	34.40	35.08	36.77	65- 70	22.21	351.5	92.2,92.2
75	26.75	28.94	30.42	30.51	24.32	23.16	23.81	25.53	70- 75	16.94	368.4	96.6,96.6
80	15.65	15.08	0	16.31	14.18	11.00	0	12.89	75- 80	10.09	378.5	99.3,99.3
85	2.818	0	0	0	3.381	0	0	0	80- 85	2.632	381.1	99.9,99.9
90	0.3690	0	0	0	0.1827	0	0	0	85- 90	0.2185	381.4	100,100
95									90- 95			
100									95-100			
105									100-105			
110									105-110			
115									110-115			
120									115-120			
125									120-125			
130									125-130			
135									130-135			
140									135-140			
145									140-145			
150									145-150			
155									150-155			
160									155-160			
165									160-165			
170									165-170			
175									170-175			
180									175-180			
DEG	LUMINOUS INTENSITY:cd								UNIT:lm			

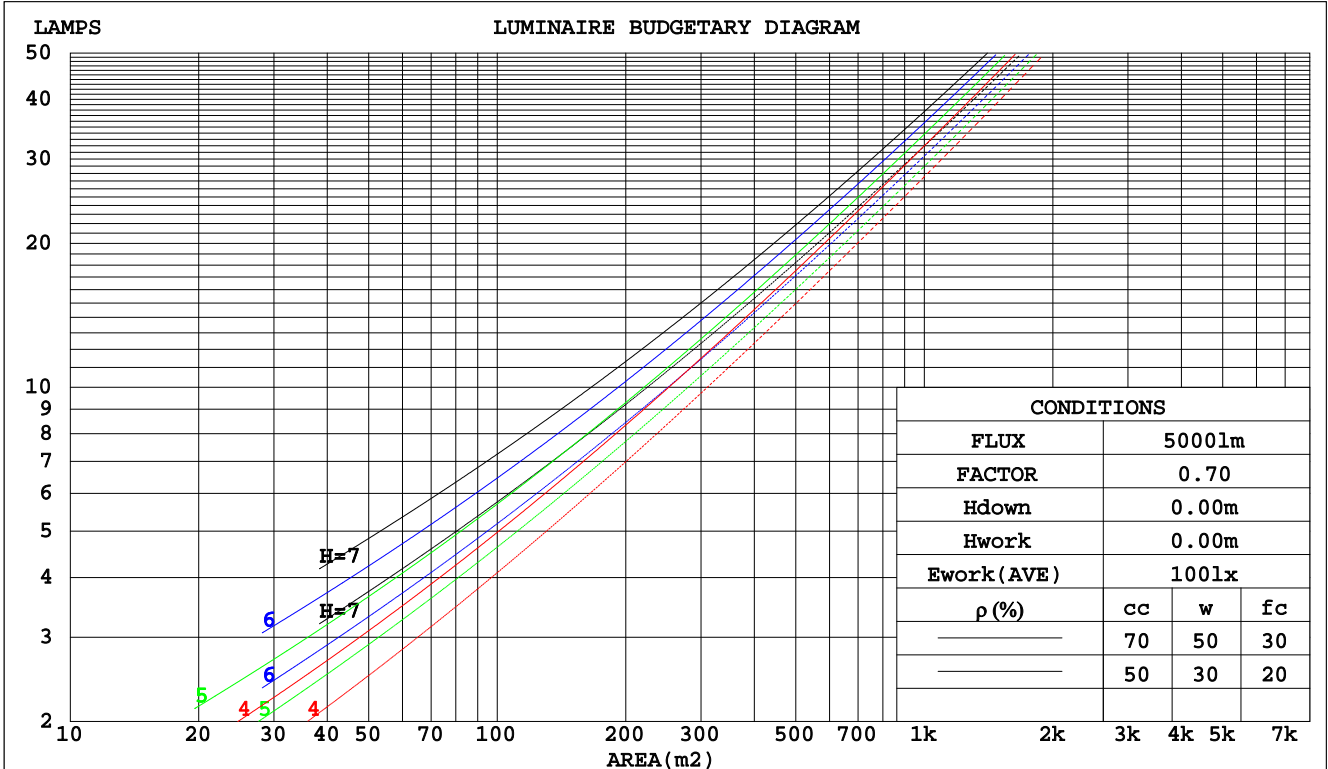
C Range: 0 - 360DEG
 C Interval: 5.0DEG
 Test Speed: HIGH
 Temperature:25.3DEG
 Operators:
 Test Date:2024-10-12

γ Range: 0 - 90DEG
 γ Interval: 0.5DEG
 Test System:EVERFINE GO-2000A_V1 SYSTEM V2.0.285
 Humidity:65.0%
 Test Distance:7.690m [K=1.0000]
 Remarks:

CU AND LUMINAIRE BUDGETARY ESTIMATE DIAGRAM

Test:U:120.6V I:0.1809A P:10.30W PF:0.4718 Lamp Flux:381.353x1 lm		
NAME: MIX-01-16.6-2.5M 2700K	TYPE:	WEIGHT:
SPEC.:	DIM.:	SERIAL No.:
MFR.:	SUR.:	PROTECTION ANGLE:

pcc	80%			70%			50%			30%			10%			0
	50%	30%	10%	50%	30%	10%	50%	30%	10%	50%	30%	10%	50%	30%	10%	0
pw																
pfc	20%			20%			20%			20%			20%			0
RCR	RCR:Room Cavity Ratio Coefficients of Utilization(CU)															
0.0	1.19	1.19	1.19	1.16	1.16	1.16	1.11	1.11	1.11	1.06	1.06	1.06	1.02	1.02	1.02	.00
1.0	1.04	1.00	.96	1.02	.98	.95	.98	.95	.92	.94	.91	.89	.90	.88	.86	.84
2.0	.91	.84	.78	.89	.83	.77	.85	.80	.76	.82	.78	.74	.79	.75	.72	.70
3.0	.80	.71	.65	.78	.70	.64	.75	.69	.63	.72	.67	.62	.70	.65	.61	.59
4.0	.70	.62	.55	.69	.61	.54	.67	.59	.54	.64	.58	.53	.62	.57	.52	.50
5.0	.63	.54	.47	.62	.53	.47	.60	.52	.46	.58	.51	.46	.56	.50	.45	.43
6.0	.56	.47	.41	.56	.47	.41	.54	.46	.40	.52	.45	.40	.50	.44	.40	.38
7.0	.51	.42	.36	.50	.42	.36	.49	.41	.36	.47	.41	.35	.46	.40	.35	.33
8.0	.47	.38	.32	.46	.38	.32	.45	.37	.32	.43	.37	.32	.42	.36	.31	.30
9.0	.43	.35	.29	.42	.34	.29	.41	.34	.29	.40	.33	.29	.39	.33	.28	.27
10.0	.39	.31	.26	.39	.31	.26	.38	.31	.26	.37	.30	.26	.36	.30	.26	.24



C Range: 0 - 360DEG
 C Interval: 5.0DEG
 Test Speed: HIGH
 Temperature: 25.3DEG
 Operators:
 Test Date: 2024-10-12

γ Range: 0 - 90DEG
 γ Interval: 0.5DEG
 Test System: EVERFINE GO-2000A_V1 SYSTEM V2.0.285
 Humidity: 65.0%
 Test Distance: 7.690m [K=1.0000]
 Remarks:

WEC AND CCEC

Test:U:120.6V I:0.1809A P:10.30W PF:0.4718 Lamp Flux:381.353x1 lm		
NAME: MIX-01-16.6-2.5M 2700K	TYPE:	WEIGHT:
SPEC.:	DIM.:	SERIAL No.:
MFR.:	SUR.:	PROTECTION ANGLE:

ρcc	80%			70%			50%			30%			10%			0
ρw	50%	30%	10%	50%	30%	10%	50%	30%	10%	50%	30%	10%	50%	30%	10%	0
ρfc	20%			20%			20%			20%			20%			0
RCR	RCR:Room Cavity Ratio						Wall Exitance Coefficients(WEC)									
0.0																
1.0	.300	.171	.054	.293	.167	.053	.280	.161	.051	.268	.155	.050	.257	.149	.048	
2.0	.288	.158	.048	.282	.155	.048	.270	.150	.047	.259	.145	.046	.249	.141	.044	
3.0	.268	.143	.043	.263	.141	.042	.253	.137	.042	.243	.133	.041	.234	.130	.040	
4.0	.248	.129	.038	.244	.127	.038	.234	.124	.037	.226	.121	.037	.218	.118	.036	
5.0	.230	.117	.034	.226	.116	.034	.218	.113	.033	.210	.111	.033	.203	.108	.033	
6.0	.214	.107	.031	.210	.106	.030	.203	.104	.030	.196	.102	.030	.189	.100	.030	
7.0	.199	.098	.028	.195	.097	.028	.189	.096	.028	.183	.094	.027	.177	.092	.027	
8.0	.186	.091	.026	.183	.090	.025	.177	.088	.025	.172	.087	.025	.166	.085	.025	
9.0	.174	.084	.024	.171	.084	.023	.166	.082	.023	.161	.081	.023	.157	.080	.023	
10.0	.164	.079	.022	.161	.078	.022	.157	.077	.022	.152	.076	.021	.148	.074	.021	

ρcc	80%			70%			50%			30%			10%			0
ρw	50%	30%	10%	50%	30%	10%	50%	30%	10%	50%	30%	10%	50%	30%	10%	0
ρfc	20%			20%			20%			20%			20%			0
RCR	RCR:Room Cavity Ratio						Ceiling Cavity Exitance Coefficients(CCEC)									
0.0	.190	.190	.190	.163	.163	.163	.111	.111	.111	.064	.064	.064	.020	.020	.020	
1.0	.180	.156	.135	.154	.134	.116	.105	.092	.080	.061	.053	.047	.019	.017	.015	
2.0	.172	.132	.098	.147	.114	.085	.101	.079	.059	.058	.046	.035	.019	.015	.011	
3.0	.164	.114	.075	.141	.099	.065	.097	.068	.045	.056	.040	.027	.018	.013	.009	
4.0	.157	.101	.058	.134	.087	.051	.092	.061	.036	.053	.036	.021	.017	.012	.007	
5.0	.149	.091	.047	.128	.078	.041	.088	.055	.029	.051	.032	.017	.016	.010	.006	
6.0	.142	.082	.039	.122	.071	.034	.084	.050	.024	.049	.029	.014	.016	.010	.005	
7.0	.135	.075	.033	.117	.065	.029	.080	.046	.020	.047	.027	.012	.015	.009	.004	
8.0	.129	.070	.029	.111	.060	.025	.077	.042	.018	.045	.025	.011	.014	.008	.003	
9.0	.123	.065	.025	.106	.056	.022	.073	.039	.016	.043	.023	.009	.014	.008	.003	
10.0	.117	.060	.022	.101	.052	.020	.070	.037	.014	.041	.022	.008	.013	.007	.003	

C Range: 0 - 360DEG
 C Interval: 5.0DEG
 Test Speed: HIGH
 Temperature:25.3DEG
 Operators:
 Test Date:2024-10-12

γ Range: 0 - 90DEG
 γ Interval: 0.5DEG
 Test System:EVERFINE GO-2000A_V1 SYSTEM V2.0.285
 Humidity:65.0%
 Test Distance:7.690m [K=1.0000]
 Remarks:

UGR(Unified Glare Rating) Table

Test:U:120.6V I:0.1809A P:10.30W PF:0.4718 Lamp Flux:381.353x1 lm										
NAME: MIX-01-16.6-2.5M 2700K					TYPE:			WEIGHT:		
SPEC.:					DIM.:			SERIAL No.:		
MFR.:					SUR.:			PROTECTION ANGLE:		
ceiling/cavity	0.7	0.7	0.5	0.5	0.3	0.7	0.7	0.5	0.5	0.3
walls	0.5	0.3	0.5	0.3	0.3	0.5	0.3	0.5	0.3	0.3
working plane	0.2	0.2	0.2	0.2	0.2	0.2	0.2	0.2	0.2	0.2
Room dimensions	Viewed crosswise					Viewed endwise				
x = 2H y = 2H	13.9	15.4	14.1	15.6	15.8	14.1	15.7	14.4	15.9	16.1
3H	15.4	16.8	15.7	17.0	17.3	15.8	17.2	16.1	17.4	17.7
4H	16.0	17.3	16.3	17.6	17.8	16.4	17.8	16.8	18.0	18.3
6H	16.4	17.6	16.7	17.9	18.2	16.5	17.8	16.8	18.0	18.3
8H	16.5	17.7	16.8	18.0	18.3	16.5	17.7	16.8	18.0	18.3
12H	16.5	17.7	16.8	18.0	18.3	16.4	17.6	16.8	17.9	18.2
4H 2H	14.6	15.9	14.9	16.1	16.4	14.8	16.1	15.1	16.4	16.6
3H	16.3	17.4	16.6	17.7	18.0	16.6	17.8	16.9	18.1	18.4
4H	17.0	18.0	17.3	18.4	18.7	17.4	18.4	17.8	18.8	19.1
6H	17.5	18.4	17.9	18.8	19.1	17.5	18.4	17.9	18.8	19.2
8H	17.6	18.5	18.0	18.9	19.3	17.5	18.3	17.9	18.7	19.1
12H	17.7	18.5	18.1	18.9	19.3	17.4	18.2	17.8	18.6	19.0
8H 4H	17.3	18.2	17.7	18.5	18.9	17.6	18.5	18.1	18.9	19.3
6H	17.9	18.7	18.4	19.1	19.5	17.8	18.5	18.3	19.0	19.4
8H	18.2	18.8	18.6	19.2	19.7	17.8	18.4	18.2	18.9	19.3
12H	18.3	18.8	18.8	19.3	19.8	17.7	18.3	18.2	18.7	19.2
12H 4H	17.3	18.1	17.7	18.5	18.9	17.7	18.5	18.1	18.8	19.3
6H	17.9	18.6	18.4	19.0	19.5	17.8	18.5	18.3	18.9	19.4
8H	18.2	18.7	18.7	19.2	19.7	17.8	18.4	18.3	18.8	19.3
Variations with the observer position at spacings:										
S = 1.0H	+ 0.1 / - 0.2					+ 0.2 / - 0.2				
1.5H	+ 0.2 / - 0.3					+ 0.1 / - 0.2				
2.0H	+ 0.2 / - 0.3					+ 0.2 / - 0.4				

CIE Pub.117 Corrected 381.4 lm Total Lamp Luminous Flux. (8log(F/F0) = -3.3)

C Range: 0 - 360DEG
 C Interval: 5.0DEG
 Test Speed: HIGH
 Temperature:25.3DEG
 Operators:
 Test Date:2024-10-12

γ Range: 0 - 90DEG
 γ Interval: 0.5DEG
 Test System:EVERFINE GO-2000A_V1 SYSTEM V2.0.285
 Humidity:65.0%
 Test Distance:7.690m [K=1.0000]
 Remarks:

UTILIZATION FACTORS TABLE

Test:U:120.6V I:0.1809A P:10.30W PF:0.4718 Lamp Flux:381.353x1 lm		
NAME: MIX-01-16.6-2.5M 2700K	TYPE:	WEIGHT:
SPEC.:	DIM.:	SERIAL No.:
MFR.:	SUR.:	PROTECTION ANGLE:

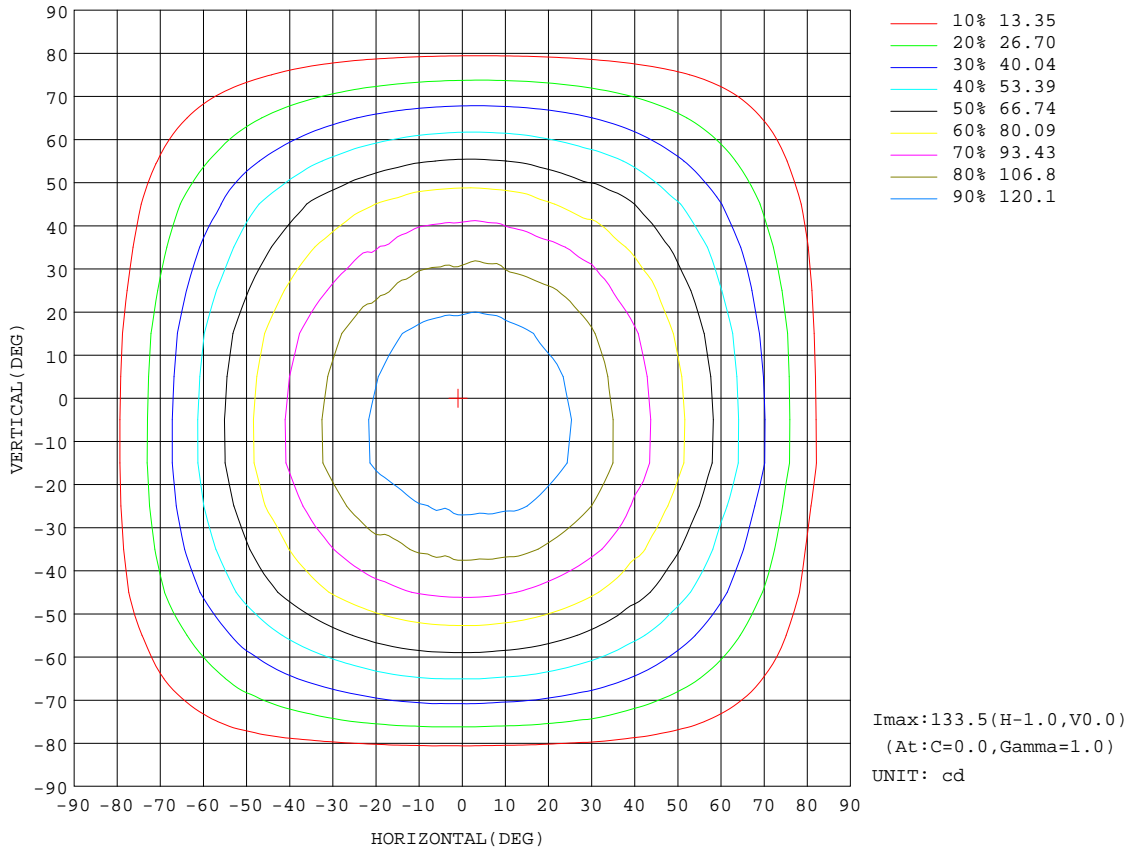
REFLECTANCE										
Ceiling	0.8	0.8	0.8	0.7	0.7	0.7	0.5	0.5	0.5	0
Walls	0.7	0.5	0.3	0.7	0.5	0.3	0.7	0.5	0.3	0
Working plane	0.2	0.2	0.2	0.2	0.2	0.2	0.2	0.2	0.2	0
ROOM INDEX	UTILIZATION FACTORS(PERCENT) $k(RI) \times RCR = 5$									
k = 0.60	57	46	39	57	46	39	55	45	38	32
0.80	67	56	48	66	55	48	65	55	48	41
1.00	76	65	58	75	64	57	73	66	57	50
1.25	83	73	66	82	72	65	79	71	64	57
1.50	88	78	71	87	78	71	84	76	70	62
2.00	95	87	80	93	86	80	90	83	78	70
2.50	99	92	86	97	90	85	93	87	83	75
3.00	103	96	90	100	94	89	96	91	87	79
4.00	107	101	97	104	99	95	100	96	92	84
5.00	109	104	100	107	102	99	102	99	96	87
ROOM INDEX	UF(total)									Direct
According to DIN EN 13032-2 2004			Suspended				SHRNOM = 1.25			

C Range: 0 - 360DEG
 C Interval: 5.0DEG
 Test Speed: HIGH
 Temperature:25.3DEG
 Operators:
 Test Date:2024-10-12

γ Range: 0 - 90DEG
 γ Interval: 0.5DEG
 Test System:EVERFINE GO-2000A_V1 SYSTEM V2.0.285
 Humidity:65.0%
 Test Distance:7.690m [K=1.0000]
 Remarks:

ISOCANDELA DIAGRAM

Test:U:120.6V I:0.1809A P:10.30W PF:0.4718 Lamp Flux:381.353x1 lm		
NAME: MIX-01-16.6-2.5M 2700K	TYPE:	WEIGHT:
SPEC.:	DIM.:	SERIAL No.:
MFR.:	SUR.:	PROTECTION ANGLE:

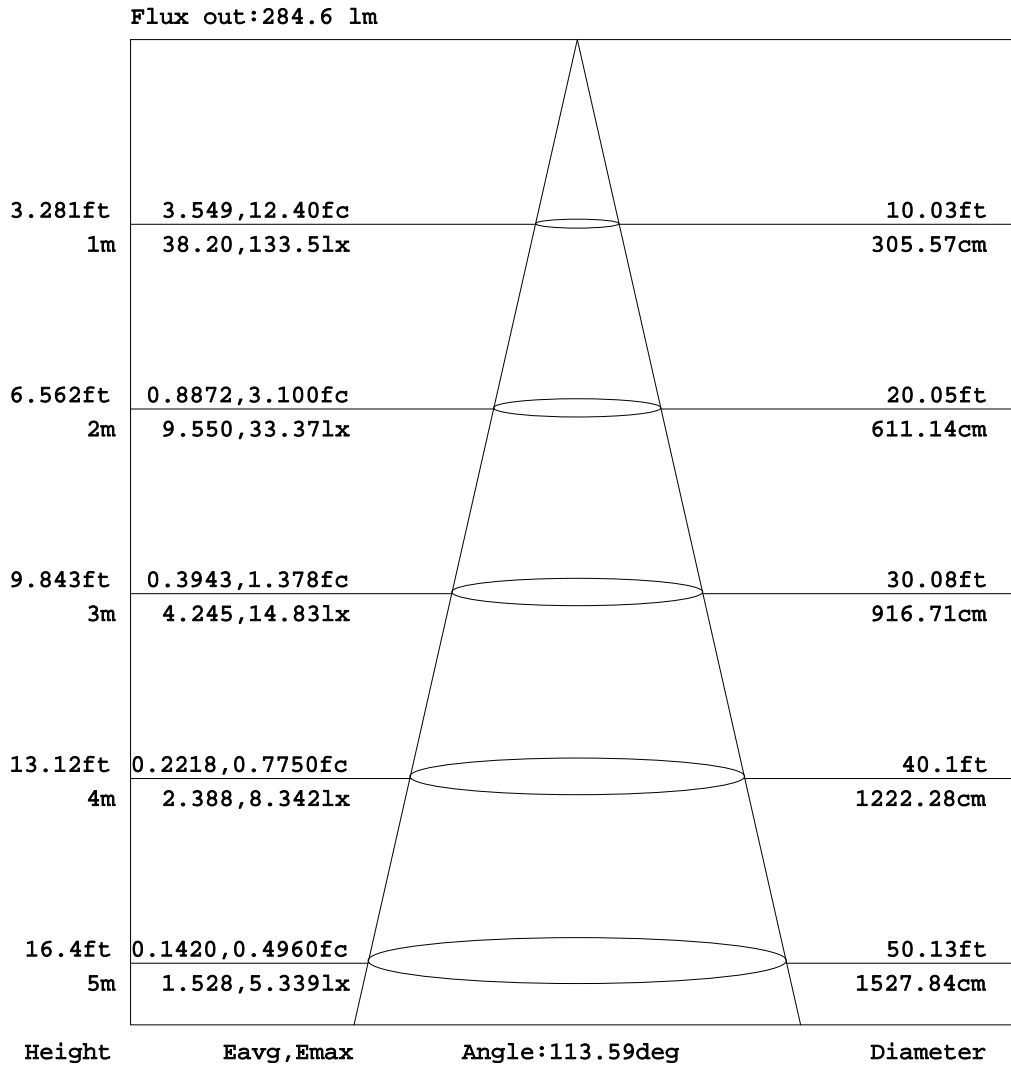


C Range: 0 - 360DEG
 C Interval: 5.0DEG
 Test Speed: HIGH
 Temperature: 25.3DEG
 Operators:
 Test Date: 2024-10-12

γ Range: 0 - 90DEG
 γ Interval: 0.5DEG
 Test System: EVERFINE GO-2000A_V1 SYSTEM V2.0.285
 Humidity: 65.0%
 Test Distance: 7.690m [K=1.0000]
 Remarks:

AAI Figure

Test:U:120.6V I:0.1809A P:10.30W PF:0.4718 Lamp Flux:381.353x1 lm		
NAME: MIX-01-16.6-2.5M 2700K	TYPE:	WEIGHT:
SPEC.:	DIM.:	SERIAL No.:
MFR.:	SUR.:	PROTECTION ANGLE:



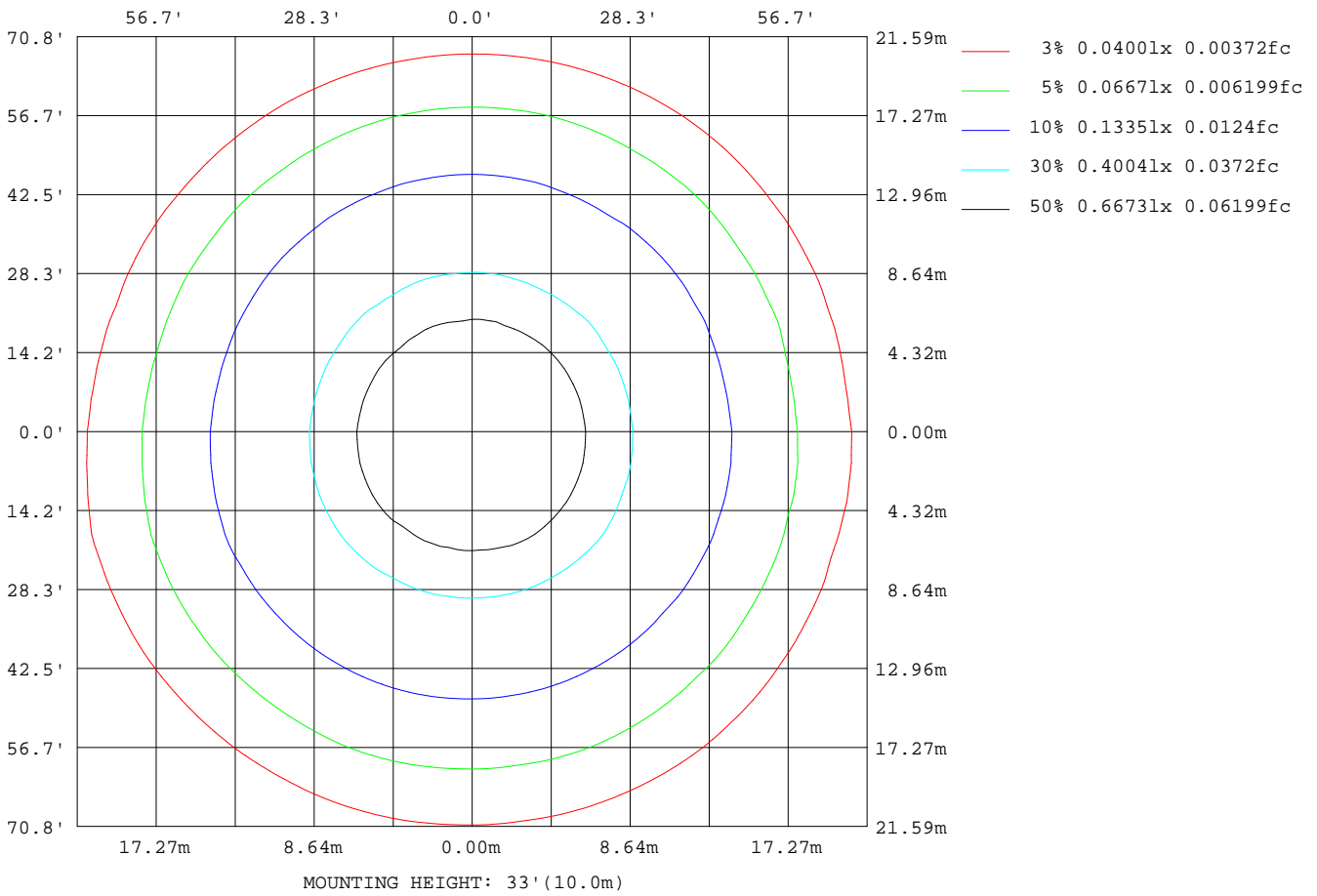
Note:The Curves indicate the illuminated area and the average illumination when the luminaire is at different distance.

C Range: 0 - 360DEG
 C Interval: 5.0DEG
 Test Speed: HIGH
 Temperature:25.3DEG
 Operators:
 Test Date:2024-10-12

γ Range: 0 - 90DEG
 γ Interval: 0.5DEG
 Test System:EVERFINE GO-2000A_V1 SYSTEM V2.0.285
 Humidity:65.0%
 Test Distance:7.690m [K=1.0000]
 Remarks:

ISOLUX DIAGRAM

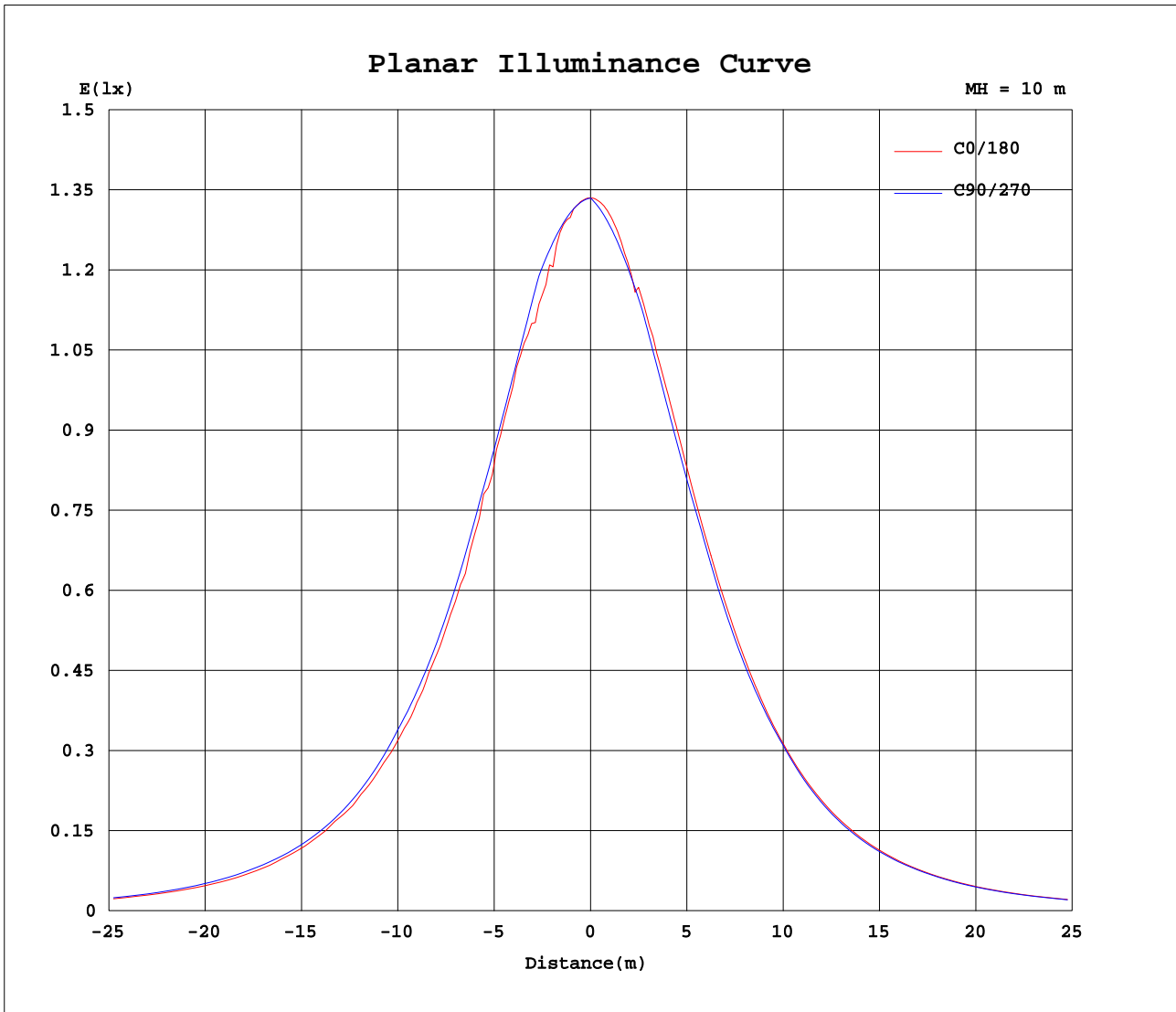
Test:U:120.6V I:0.1809A P:10.30W PF:0.4718 Lamp Flux:381.353x1 lm		
NAME: MIX-01-16.6-2.5M 2700K	TYPE:	WEIGHT:
SPEC.:	DIM.:	SERIAL No.:
MFR.:	SUR.:	PROTECTION ANGLE:



C Range: 0 - 360DEG
 C Interval: 5.0DEG
 Test Speed: HIGH
 Temperature: 25.3DEG
 Operators:
 Test Date: 2024-10-12

γ Range: 0 - 90DEG
 γ Interval: 0.5DEG
 Test System: EVERFINE GO-2000A_V1 SYSTEM V2.0.285
 Humidity: 65.0%
 Test Distance: 7.690m [K=1.0000]
 Remarks:

Planar Illuminance Curve



C Range: 0 - 360DEG
 C Interval: 5.0DEG
 Test Speed: HIGH
 Temperature: 25.3DEG
 Operators:
 Test Date: 2024-10-12

γ Range: 0 - 90DEG
 γ Interval: 0.5DEG
 Test System: EVERFINE GO-2000A_V1 SYSTEM V2.0.285
 Humidity: 65.0%
 Test Distance: 7.690m [K=1.0000]
 Remarks:

LUMINOUS DISTRIBUTION INTENSITY DATA

Test:U:120.6V I:0.1809A P:10.30W PF:0.4718 Lamp Flux:381.353x1 lm		
NAME: MIX-01-16.6-2.5M 2700K	TYPE:	WEIGHT:
SPEC.:	DIM.:	SERIAL No.:
MFR.:	SUR.:	PROTECTION ANGLE:

Table--1

UNIT: cd

C(DEG) γ (DEG)	0	5	10	15	20	25	30	35	40	45	50	55	60	65	70	75	80	85	90
0	133	133	133	133	133	133	133	133	133	133	133	133	133	133	133	133	133	133	133
5	133	133	133	133	133	133	133	133	133	133	133	133	133	133	133	133	133	133	133
10	130	130	131	131	131	131	131	132	132	132	132	132	132	132	132	132	132	132	132
15	126	126	126	127	127	127	128	129	129	129	130	131	131	131	132	132	132	132	132
20	125	125	125	125	125	125	126	126	127	128	128	128	128	128	128	128	127	127	127
25	120	120	120	120	121	121	122	123	123	123	123	123	123	123	123	123	123	122	122
30	113	113	114	115	115	116	117	117	117	117	118	118	119	119	118	118	118	117	118
35	106	106	106	107	109	110	110	110	111	111	112	113	113	112	112	111	111	110	110
40	99.1	98.6	98.7	99.7	101	101	102	103	104	104	104	104	104	104	104	103	103	103	103
45	90.2	90.4	91.7	91.7	92.7	92.4	92.8	95.4	94.9	94.6	94.5	94.6	94.7	94.9	95.2	95.4	95.6	95.8	95.9
50	82.1	81.9	82.9	83.4	82.4	84.0	84.8	83.5	84.5	84.7	84.9	85.3	85.4	85.4	85.5	85.5	85.5	85.6	85.6
55	71.9	72.0	73.3	72.7	72.7	73.7	73.4	73.8	74.0	74.5	74.6	74.8	74.9	75.0	75.2	75.3	75.2	75.4	75.4
60	60.5	61.2	62.1	61.8	62.3	61.7	62.3	63.4	63.5	62.9	63.7	64.0	64.4	64.7	65.0	65.1	64.9	65.2	65.2
65	49.5	50.0	50.1	50.0	49.5	50.8	51.3	51.3	52.0	52.4	52.9	53.4	53.4	53.5	53.6	53.6	53.4	53.5	53.6
70	38.2	39.4	38.1	37.9	38.6	39.1	39.5	40.0	40.7	40.9	41.1	41.4	41.6	41.6	41.7	41.8	41.7	41.8	42.0
75	26.7	27.0	26.4	26.8	26.8	27.4	28.0	28.3	28.6	28.9	29.2	29.5	29.9	29.7	29.9	30.1	30.1	30.2	30.4
80	15.7	15.0	15.3	15.5	15.7	16.2	16.5	16.8	16.9	15.1	12.5	9.99	7.62	5.33	3.48	1.99	0.89	0.22	0.00
85	2.82	5.38	5.88	5.98	5.49	2.92	0.00	0.00	0.00	0.00	0.00	0.00	0.00	0.00	0.00	0.00	0.00	0.00	0.00
90	0.37	0.00	0.00	0.00	0.00	0.00	0.00	0.00	0.00	0.00	0.00	0.00	0.00	0.00	0.00	0.00	0.00	0.00	0.00

C Range: 0 - 360DEG
 C Interval: 5.0DEG
 Test Speed: HIGH
 Temperature:25.3DEG
 Operators:
 Test Date:2024-10-12

γ Range: 0 - 90DEG
 γ Interval: 0.5DEG
 Test System:EVERFINE GO-2000A_V1 SYSTEM V2.0.285
 Humidity:65.0%
 Test Distance:7.690m [K=1.0000]
 Remarks:

LUMINOUS DISTRIBUTION INTENSITY DATA

Test:U:120.6V I:0.1809A P:10.30W PF:0.4718 Lamp Flux:381.353x1 lm		
NAME: MIX-01-16.6-2.5M 2700K	TYPE:	WEIGHT:
SPEC.:	DIM.:	SERIAL No.:
MFR.:	SUR.:	PROTECTION ANGLE:

Table--2

UNIT: cd

C(DEG) γ (DEG)	95	100	105	110	115	120	125	130	135	140	145	150	155	160	165	170	175	180	185	
0	133	133	133	133	133	133	133	133	133	133	133	133	133	133	133	133	133	133	133	
5	133	133	133	133	133	133	133	133	133	133	133	133	133	133	133	133	133	133	132	
10	132	132	132	132	132	132	132	131	131	131	131	130	130	130	129	129	129	129	129	
15	132	132	132	131	131	131	130	130	129	128	127	127	127	128	127	127	127	127	127	
20	127	127	127	127	127	127	127	127	127	126	126	125	124	124	123	123	123	123	122	
25	122	121	122	122	122	122	121	121	121	122	122	121	120	119	119	118	118	118	117	
30	118	116	118	117	117	116	115	115	116	116	116	116	115	114	113	112	112	112	111	
35	111	110	110	110	110	109	109	111	110	110	109	108	108	108	106	105	105	105	104	
40	103	103	103	103	102	102	103	103	103	102	102	101	100	100	99.3	98.0	97.2	97.0	95.7	
45	95.9	95.8	95.6	95.3	94.8	95.0	94.8	94.4	94.1	93.7	94.1	92.7	91.9	91.4	91.4	89.7	88.7	88.5	87.2	
50	85.7	85.9	86.0	86.1	86.2	86.4	86.3	85.6	85.0	84.6	84.3	83.8	82.8	82.7	82.0	80.7	79.5	79.1	77.7	
55	75.6	75.7	75.8	75.8	75.7	75.6	75.6	75.8	76.0	75.3	74.4	73.9	74.3	72.8	71.8	71.3	69.6	69.2	67.9	
60	65.4	65.6	65.6	65.4	65.2	64.9	64.8	64.7	64.7	64.9	65.1	64.2	63.3	63.3	61.8	60.9	59.3	58.6	57.4	
65	53.8	54.0	54.1	54.1	53.9	53.8	53.9	53.8	53.7	53.6	53.5	53.6	52.8	52.0	51.8	49.8	48.4	47.4	46.4	
70	42.1	42.4	42.4	42.3	42.1	42.1	42.0	42.1	42.3	42.5	42.2	41.5	41.1	40.9	40.2	39.0	37.5	35.9	35.2	
75	30.5	30.7	30.7	30.5	30.5	30.4	30.3	30.3	30.5	30.4	30.5	29.7	29.0	28.8	29.1	28.0	26.0	24.3	23.6	
80	0.23	0.91	2.04	3.57	5.49	7.76	10.4	13.2	16.3	18.3	18.5	17.9	17.5	17.2	16.9	17.1	15.7	14.2	12.9	
85	0.00	0.00	0.00	0.00	0.00	0.00	0.00	0.00	0.00	0.00	0.00	0.00	0.00	3.30	6.41	6.80	6.80	6.71	3.38	4.05
90	0.00	0.00	0.00	0.00	0.00	0.00	0.00	0.00	0.00	0.00	0.00	0.00	0.00	0.00	0.00	0.00	0.00	0.18	0.00	

C Range: 0 - 360DEG
 C Interval: 5.0DEG
 Test Speed: HIGH
 Temperature:25.3DEG
 Operators:
 Test Date:2024-10-12

γ Range: 0 - 90DEG
 γ Interval: 0.5DEG
 Test System:EVERFINE GO-2000A_V1 SYSTEM V2.0.285
 Humidity:65.0%
 Test Distance:7.690m [K=1.0000]
 Remarks:

LUMINOUS DISTRIBUTION INTENSITY DATA

Test:U:120.6V I:0.1809A P:10.30W PF:0.4718 Lamp Flux:381.353x1 lm		
NAME: MIX-01-16.6-2.5M 2700K	TYPE:	WEIGHT:
SPEC.:	DIM.:	SERIAL No.:
MFR.:	SUR.:	PROTECTION ANGLE:

Table--3

UNIT: cd

C(DEG) γ (DEG)	190	195	200	205	210	215	220	225	230	235	240	245	250	255	260	265	270	275	280
0	133	133	133	133	133	133	133	133	133	133	133	133	133	133	133	133	133	133	133
5	132	132	132	132	131	131	131	131	131	131	131	131	131	131	131	131	131	131	131
10	128	128	128	128	128	128	128	128	128	128	128	128	128	128	128	128	128	128	128
15	126	126	125	124	123	124	124	124	125	125	125	125	125	125	125	125	125	125	125
20	121	121	121	121	121	121	121	121	121	121	121	120	120	120	120	119	120	120	120
25	116	116	116	116	116	116	115	115	115	114	115	115	115	114	115	114	115	116	115
30	110	110	109	110	110	109	108	108	107	108	108	109	109	109	109	108	109	111	109
35	103	103	103	103	102	101	102	102	99.8	99.9	101	101	102	102	102	101	102	103	103
40	95.1	95.0	95.0	94.2	93.8	93.5	94.1	94.2	94.7	92.4	92.4	93.9	94.5	94.8	94.6	94.3	94.8	95.1	95.1
45	86.5	86.6	85.8	85.3	85.4	85.6	84.9	85.3	85.6	85.9	85.7	85.9	86.6	87.5	87.4	87.5	87.6	87.5	87.4
50	77.4	77.0	76.2	76.0	76.4	76.5	76.5	76.4	76.8	77.8	77.5	77.4	77.2	77.7	77.5	77.6	77.6	77.6	77.7
55	67.8	66.8	66.4	66.5	66.4	66.5	67.2	68.2	67.3	67.0	66.9	67.1	67.0	67.4	67.4	67.5	67.6	67.7	67.8
60	57.1	56.0	56.1	56.2	56.6	57.1	56.7	56.6	56.5	56.3	56.6	56.7	56.9	57.1	57.2	57.4	57.6	57.7	57.8
65	45.7	45.4	44.9	45.6	46.3	45.7	45.4	45.5	45.7	45.8	45.8	45.8	45.9	46.0	46.1	46.2	46.4	46.5	46.7
70	34.2	34.1	34.4	33.8	34.2	34.3	34.4	34.4	34.4	34.4	34.5	34.6	34.6	34.7	34.8	35.0	35.1	35.3	35.4
75	23.0	23.4	23.1	23.0	23.1	23.1	23.2	23.2	23.2	23.2	23.2	23.4	23.4	23.5	23.6	23.7	23.8	24.0	24.2
80	12.9	12.6	12.6	12.6	12.6	12.5	12.3	11.0	9.22	7.41	5.68	4.09	2.68	1.54	0.70	0.18	0.00	0.18	0.72
85	4.21	4.18	3.63	1.97	0.00	0.00	0.00	0.00	0.00	0.00	0.00	0.00	0.00	0.00	0.00	0.00	0.00	0.00	0.00
90	0.00	0.00	0.00	0.00	0.00	0.00	0.00	0.00	0.00	0.00	0.00	0.00	0.00	0.00	0.00	0.00	0.00	0.00	0.00

C Range: 0 - 360DEG
 C Interval: 5.0DEG
 Test Speed: HIGH
 Temperature:25.3DEG
 Operators:
 Test Date:2024-10-12

γ Range: 0 - 90DEG
 γ Interval: 0.5DEG
 Test System:EVERFINE GO-2000A_V1 SYSTEM V2.0.285
 Humidity:65.0%
 Test Distance:7.690m [K=1.0000]
 Remarks:

LUMINOUS DISTRIBUTION INTENSITY DATA

Test:U:120.6V I:0.1809A P:10.30W PF:0.4718 Lamp Flux:381.353x1 lm		
NAME: MIX-01-16.6-2.5M 2700K	TYPE:	WEIGHT:
SPEC.:	DIM.:	SERIAL No.:
MFR.:	SUR.:	PROTECTION ANGLE:

Table--4

UNIT: cd

C(DEG) γ (DEG)	285	290	295	300	305	310	315	320	325	330	335	340	345	350	355				
0	133	133	133	133	133	133	133	133	133	133	133	133	133	133	133				
5	131	131	131	131	131	131	131	131	131	132	132	132	132	133	133				
10	128	128	128	128	128	128	128	129	129	129	129	129	130	130	130				
15	125	125	125	125	125	125	125	124	125	124	124	124	125	125	126				
20	120	120	120	120	121	121	121	121	121	121	121	122	123	123	124				
25	115	115	114	115	115	115	116	116	117	117	117	117	117	118	119				
30	111	108	109	109	109	109	110	110	110	111	111	111	112	112	112				
35	102	102	102	102	103	103	104	103	103	103	104	104	104	104	105				
40	94.3	94.5	94.1	94.4	95.0	95.8	96.6	97.0	95.8	95.1	95.7	96.6	96.5	96.8	97.7				
45	87.2	87.1	85.9	86.1	86.4	86.6	87.5	87.7	87.1	87.7	87.8	87.9	88.5	88.4	88.9				
50	77.8	77.6	77.2	77.2	77.1	78.7	78.4	78.4	78.7	79.4	78.9	78.4	79.1	79.4	80.2				
55	67.9	67.5	67.4	67.4	67.4	69.1	70.1	69.6	69.2	68.8	69.8	68.8	69.0	69.7	70.1				
60	58.0	57.9	57.9	57.7	58.2	58.5	59.0	58.9	59.0	58.6	58.6	59.4	58.9	59.0	59.2				
65	46.9	47.1	47.4	47.6	47.8	47.9	47.8	47.7	47.7	48.3	48.1	47.7	48.1	47.9	48.3				
70	35.6	35.8	36.0	36.2	36.4	36.6	36.8	36.9	36.9	36.8	37.0	37.0	37.0	36.3	37.0				
75	24.4	24.6	24.8	25.0	25.2	25.4	25.5	25.7	25.9	25.9	25.8	25.8	25.9	26.3	26.5				
80	1.60	2.83	4.37	6.20	8.27	10.5	12.9	14.8	15.1	15.3	15.4	15.3	15.5	15.6	15.6				
85	0.00	0.00	0.00	0.00	0.00	0.00	0.00	0.00	0.00	0.00	0.00	2.85	5.73	6.50	6.60	4.28			
90	0.00	0.00	0.00	0.00	0.00	0.00	0.00	0.00	0.00	0.00	0.00	0.00	0.00	0.00	0.00				

C Range: 0 - 360DEG
 C Interval: 5.0DEG
 Test Speed: HIGH
 Temperature:25.3DEG
 Operators:
 Test Date:2024-10-12

γ Range: 0 - 90DEG
 γ Interval: 0.5DEG
 Test System:EVERFINE GO-2000A_V1 SYSTEM V2.0.285
 Humidity:65.0%
 Test Distance:7.690m [K=1.0000]
 Remarks: