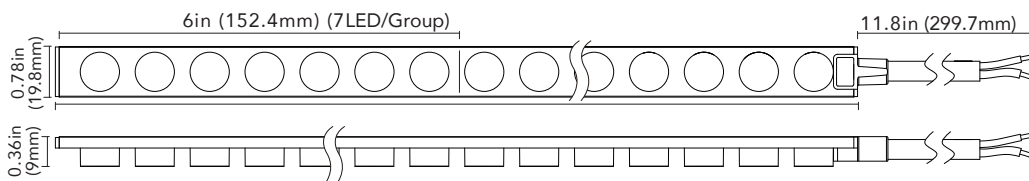


The LED Wall Washer is the ideal solution for architectural, signage, and landscape lighting applications.



Features

- Safe 24V DC operation
- Low power consumption: 5.8W/FT
- Suitable for indoor and outdoor use
- Beam angle: 30°
- Available in 2700K, 3000K, 4000K colour temperatures
- Dimmable with dimmable drivers
- Field cuttable every 6". Custom cuts available.
- Long life 30, 000 hours
- cULus certified for wet locations
- 3 year limited warranty

Specifications

Colour Temperature	2700K, 3000K, 4000K
Input Voltage	24V DC
Power Consumption (W)	5.8W/FT
Luminous Flux	580LM/FT(2700K), 610LM/FT(3000K), 640LM/FT(4000K)
Efficacy	100LM/W (2700K), 105LM/W (3000K), 110LM/W(4000K)
LEDs	SMD2835
CRI	90+
Max Run	16 FT
Life Span (hours)	30,000
Beam Angle	30°
Approvals	cULus for wet locations

Ordering Codes:

ES-LS2835-27K-42-24-30

ES-LS2835-30K-42-24-30

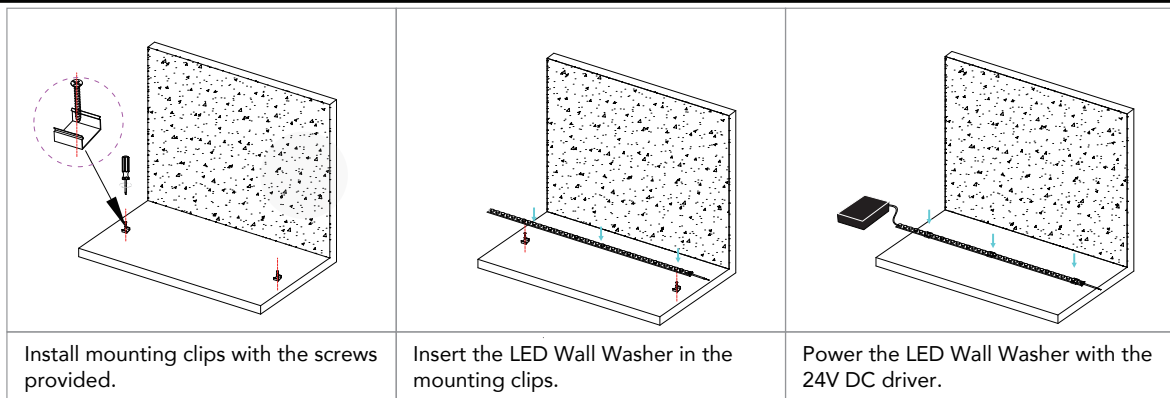
ES-LS2835-40K-42-24-30

NOTE:

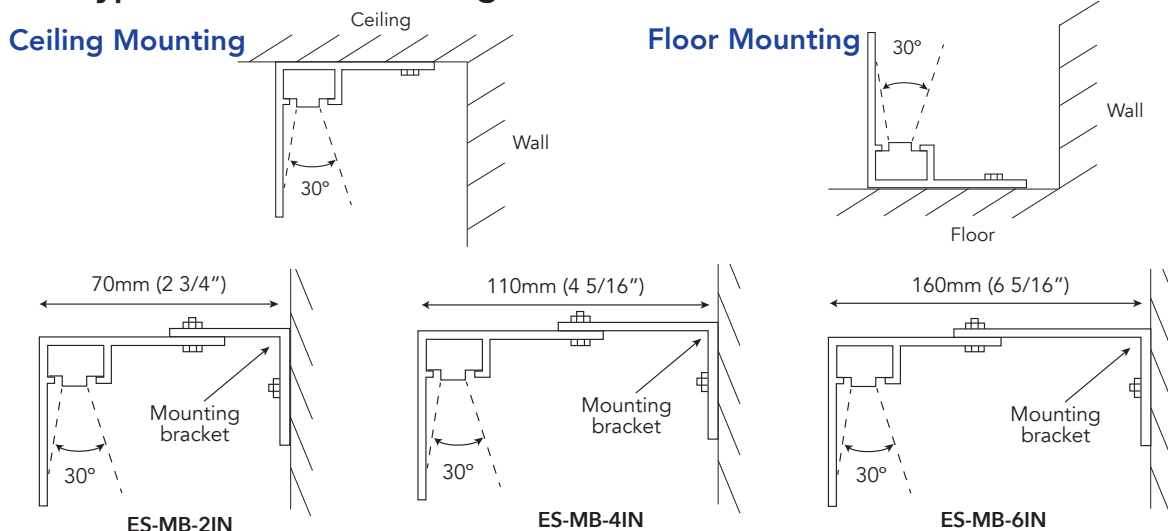
The product is sold in 33FT rolls, but the maximum single run is 16FT. Custom lengths available.

Project		Type	
Date		Contact	
Notes			

Mounting Clips Installation



Installation with "L" type extrusion to reduce glare



Accessories & Extrusions:



Indoor/Outdoor Dimmable Drivers

MLDRE-40-24-DM

6.77" X 2.67" X 1.26" (171 X 68 X 32mm)

MLDRE-96-24-DM

6.77" X 2.67" X 1.26" (171 X 68 X 32mm)

Non-Dimmable Drivers

MLDR-120-24

Indoor/Outdoor driver 120W hardwire
 Input: 100 - 240V AC; Output: 24V DC
 10" x 3 3/8" x 3 3/16" (254 x 85.7 x 80.9mm)