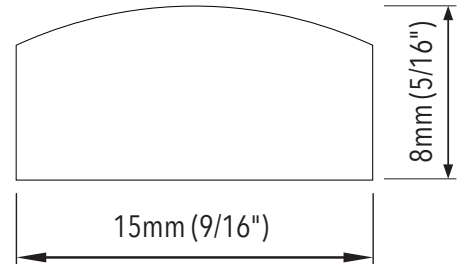


An ideal solution for accent lighting in residential, commercial and retail applications, our 120V AC LED ESTRIP can be easily installed without the need of any additional driver, in indoor and outdoor applications.



## Features

- 120V AC input voltage
- Low power consumption: 12W/M (3.7W/FT)
- Cuttable every 10CM (3 15/16") - factory only
- Only available in factory pre-assembled custom lengths
- Luminous flux: 1200LM/M (366LM/FT)
- Dimmable with TRIAC dimmers
- Easy installation
- Colour temperatures: 3000K, 4000K, 6000K
- Waterproof - IP65
- 2 year limited warranty

## Specifications

Colour Temperature	3000K, 4000K, 6000K
Input Voltage	120VAC
Power Consumption (W)	12W/M (3.7W/FT)
Luminous Flux	1200LM/M (366LM/FT)
LEDs	SMD2835
CRI	80
Life Span (hours)	30,000
Cuttable	Cuttable every 10CM (3 15/16") - factory only
Approvals	cETLus

## Ordering Codes:

YH-HRF50D120S-283580WW (3000K)

YH-HRF50D120S-283580NW (4000K)

YH-HRF50D120S-283580W (6000K)

## Note:

1) Custom lengths to be ordered in feet.

2) Each custom length comes with Power Plug (YH-POWERPLUG-15A) or Hardwire Power Cord (YH-2835D-PWP) and End Cap (YH-ENDCAP) factory pre-assembled. The Power Plug / Hardwire Power Cord and End Cap need to be ordered separately.

Project		Type	
Date		Contact	
Notes			

An ideal solution for accent lighting in residential, commercial and retail applications, our 120V AC LED ESTRIP can be easily installed without the need of any additional driver, in indoor and outdoor applications.

## Accessories:



**YH-2835D-PWP**  
15A Hardwire Power  
Cord



**YH-POWERPLUG-15A**  
15A Power Plug



**YH-MC-6IN**  
Middle Connector 6IN

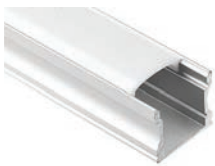
**YH-MC-3FT**  
Middle Connector 3FT

**YH-MC-6FT**  
Middle Connector 6FT



**YH-ENDCAP**  
End Cap

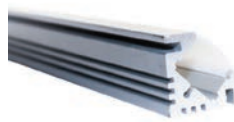
## Extrusions:



**LV-LB-D3-FR\***  
Surface mount  
aluminum extrusion  
and frosted PC cover  
  
*\*Available in 1M (39")  
and 2M (78") lengths.*



**LV-LB-W3-FR\***  
Recessed aluminum  
extrusion and frosted  
PC cover  
  
*\*Available in 1M (39")  
lengths.*



**LV-LB-V3-FR\***  
Corner surface mount  
aluminum extrusion  
and frosted PC cover  
  
*\*Available in 1M (39")  
lengths.*



**MLS-STPV-T\***  
PVC "U" mounting  
channel  
  
*\*Available in 1M (39")  
lengths.*



**YH-FIXCLIP**  
Mounting clips