

LED Disc Light Dome

MAGIC LITE
YOUR TRUSTED LIGHTING PARTNER

STAINLESS STEEL CONSTRUCTION

A robust LED marker light ideal for public or residential applications, indoor or outdoor.



Features

- ✓ Dimmable with dimmable power supplies
- ✓ Long life – 50,000 hours
- ✓ Low power consumption 3 watts per fixture
- ✓ Safe 12 volt, Class 2 power supply (not included)
- ✓ Up to 30 fixtures per power supply
- ✓ cETLus listed for in-wall, in-floor, outdoor wet, and outdoor burial applications
- ✓ Fits in any 1.5" diameter hole, 4" long
- ✓ Stainless steel construction (SUS 316)
- ✓ Available concrete form for concrete pour applications
- ✓ 3 year limited warranty

Applications

- Steps
- Aisles
- Paths
- Driveways
- Direction lighting
- Decorative lighting
- Landscape accents

1150 Northside Road, Unit 14, Burlington, ON, Canada L7M 1W8
Tel: 905-825-9592 • Fax: 905-825-8334 • lights@magiclite.com



magiclite.com

LED Disc Light Dome

A robust LED marker light ideal for public or residential applications, indoor or outdoor.

Finish

Stainless steel. SUS316.

Electrical

12V DC, 3watts.

Certification

cETLus listed for wet, IC, wall and direct burial applications.

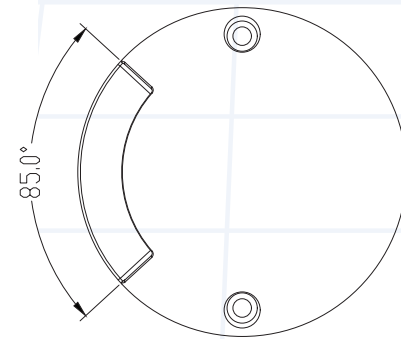
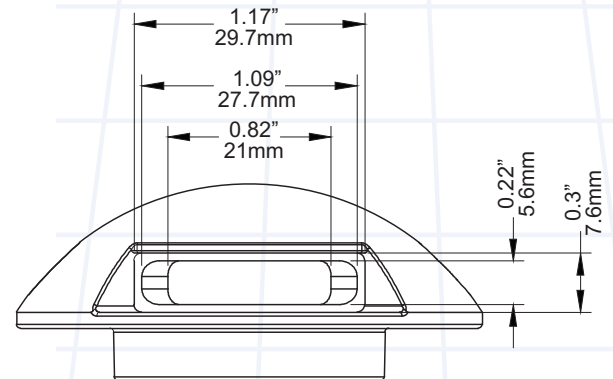
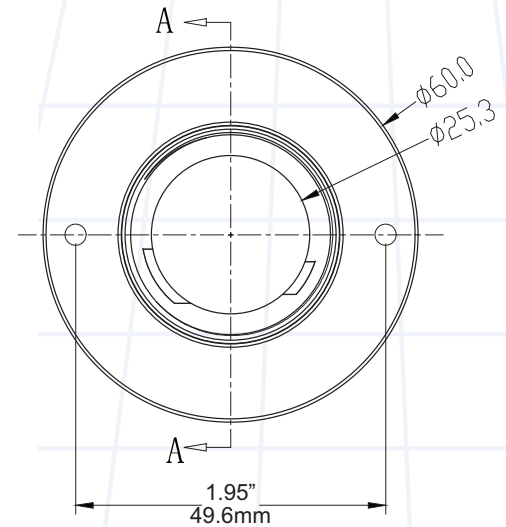
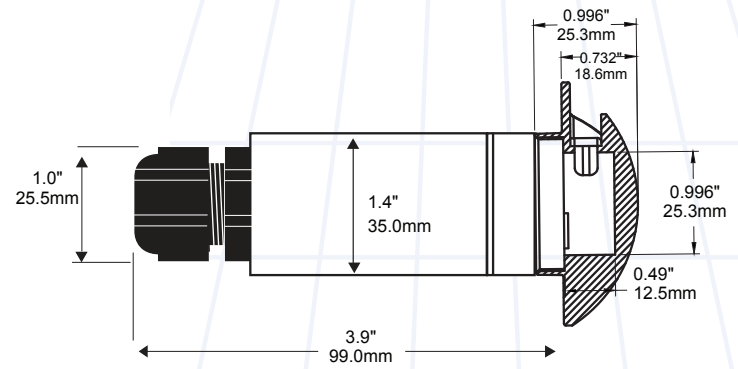
Warranty

Limited warranty: This fixture is free from defects in materials and workmanship for a period of 3 years from date of purchase.

Specifications

LED Disc Light Dome	
Product Code	LEDD-C-XX-D
Voltage	12V DC
Power Consumption (W)	3 watts
LED Colours	Cool White 98 lumens @ 5500K Warm White 95 lumens @ 2700K
Wiring Options	Fixtures can be parallel wired or "Daisy chained" together with up to 18 fixtures on our largest dimmable driver. NOTE: Use LW-18G-CL2 for all in-wall applications. Use LW-18G-BUR for all burial applications.
LED Life	50,000 hours
CRI	80+
Cover Finish	Stainless Steel SUS316
Barrel Finish	Stainless Steel SUS316
LED Type	5050
Lens	Clear Tempered Glass
Approvals	cETLus listed for wet, IC, wall and direct burial applications.

XX=WH (cool white 5500K), WW (warm white 2700K)



CONCRETE FORM

LEDD-CF

Recommended for easy installation in concrete pour applications.

