

MOUNTING INSTRUCTIONS

1. First remove cover by unscrewing the two bolts holding cover to the can.
2. Remove Xenon bulb by pulling bulb directly outward from bulb socket.
3. Remove reflector by unscrewing one bolt at bottom of "V" in reflector, and gently lifting reflector from around bulb socket and out of the can.
4. Place all parts in a secure location until reassembly.
5. Select a mounting location for the Xenon Step Light. Fixture should be within reach of 120 V power, located approximately 9 inches above the surface to be lit, and situated at the best location along the mounting surface for the illumination task.
6. Cut a 5-1/2" (L), 4" (W), and 2-1/2" (D) hole in mounting surface for the can.
7. Xenon Step Light has wide flanges that will allow the can to be securely affixed to almost any surface with the four mounting screws and wall anchors provided. Place can in hole and mark the position of the four mounting screws. Remove can and drill a pilot hole for the screws, or a hole for the wall anchors. Install anchors (if applicable), reposition can in hole, and securely fasten the can to the mounting surface by firmly tightening four mounting screws.

CAUTION! Local code may require plywood backing with wood screws (not included) for ceiling mount applications. Check with you local building department before installation.

Important: It is recommended that you use Magic Lite's Concrete Cap (SL-CC) for concrete pour installations. These caps assist in providing a proper reveal for flush mount of fixture cover after concrete is dry.

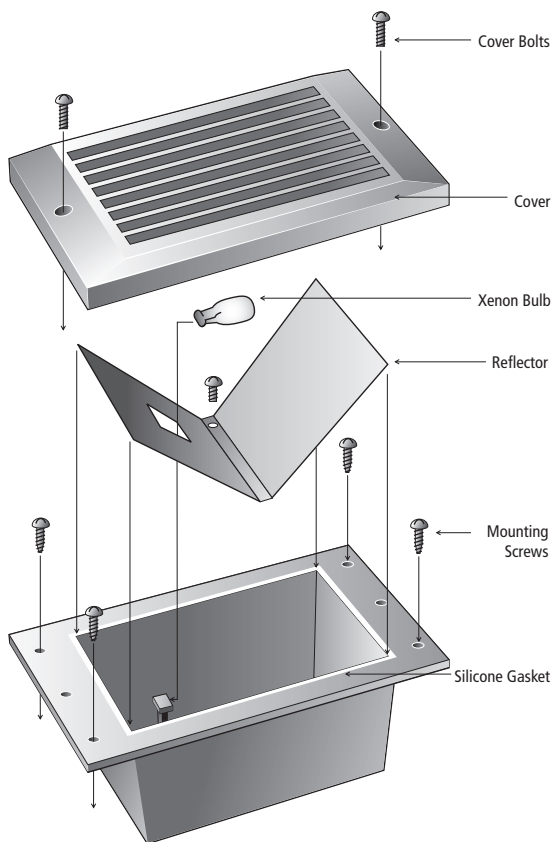
WIRING INSTRUCTONS

CAUTION! Only qualified electricians, or people familiar with household electrical circuits, should bring 120 V power to the fixture. Wiring may require an inspection by the local building department. Check with your local building department before installation.

CAUTION! Before bringing 120 V power to the fixture, make sure incoming wire is not "hot" and all power coming to the wire is off.

CAUTION! All connections must be made in accordance with this instruction manual, current Canadian Electrical Code, and all local building codes. Minimum 90°C supply conductors.

1. Through one of the many NPT fittings provided, bring in 120 V power wiring. If 120 V wire will not conveniently enter one of the many NPT fittings provided, simply unscrew the can, rotate can 180 degrees and reinstall. Can is entirely symmetrical, and 180 degree rotation will not affect mounting holes.
2. Secure wire to fixture with the appropriate strain relief (not provided).
3. Strip 1/3" (8mm) of the insulation off each incoming 120 V power wire. Connect white incoming 120 V wire (neutral wire) to push-in connector on white



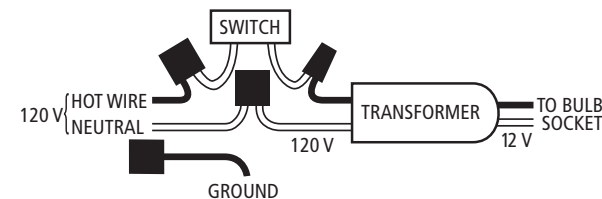
wire from transformer. Connect black incoming 120 V wire to push-in connector on black wire from transformer. Connect ground wire to push-in connector on green wire screwed into can. Push all wires firmly down into connectors, so that uninsulated wire is not exposed.

RELAMPING

CAUTION! If Xenon Step Light has recently been operating, glass lens, bulb and fixture are HOT! Turn Off fixture and allow unit to cool for 15 minutes.

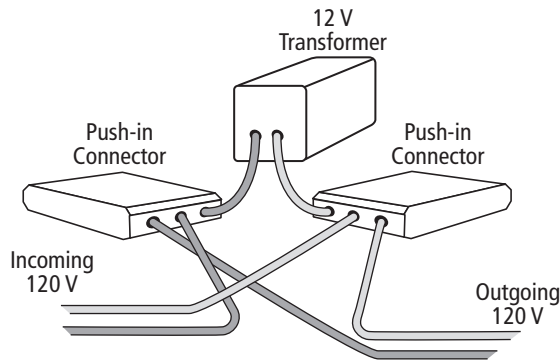
CAUTION! Always make sure there is NO power coming to the fixture, or 120 V power wiring, before relamping!

1. Remove cover by unscrewing two bolts holding can to cover.
2. Remove Xenon bulb by pulling directly outward from the bulb socket.
3. Replace with a 18 watt, 12 volt, wedge base Xenon bulb only (Our model number XTL-BULB). Push bulb directly into socket until bulb base is firmly seated.
4. Make sure Silicone gasket is properly in place on top of can. Place cover on can with Louvre or Scoop openings pointing toward the illumination surface. Secure cover to can by reinstalling the two screw bolts provided.
5. Re-energize the 120 V to the fixture. If bulb does not light, check for a loose bulb in socket by repeating steps #1 through #4 above. If bulb still does not light, retry steps #1 through #4 above with a new Xenon bulb.



THROUGH-WIRE, 120 V POWER

- Disconnect from all 120 V power prior to installation.
- Connections must be made in accordance with all local electric codes and/or Canadian Electrical Code.
- Minimum 75°C supply conductors.
- Interconnect up to 1188 Watts (66 bulbs).
- 14 gauge (Romex Type) or better wire is required.
- Requires strain reliefs.
- Installations in wet locations should use RTV silicone or water-tight fittings on all connections to fixtures.



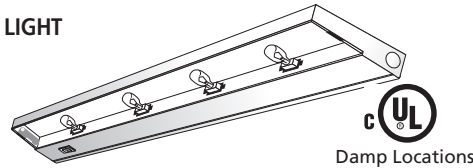
MAGIC LITE
YOUR TRUSTED LIGHTING PARTNER

2526 Speers Road, Unit 4-9
Oakville, Ontario, Canada L6L 5M2
Tel: 905-825-9592 • Out of Area: 1-888-945-5483 • Fax: 905-825-8334
www.magiclite.com

MLI018V4-1114

OTHER XENON PRODUCTS BY MAGIC LITE

XENON TASK LIGHT



Damp Locations

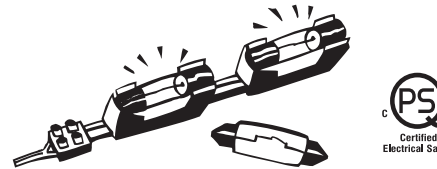
The perfect under-cabinet task light fixture. Brighter than fluorescent, a fraction the heat of halogen, and four times the bulb life of halogen.

XENON MINI LIGHT



A completely new design of the industry standard "hockey puck". A fraction the heat of a halogen, four times the bulb life of halogen, similar bright white light.

BRITESTRIP



Our brightest, flexible, linear lighting system. Parallel wiring, flexibility and field cutability make Brite Strip the professional's choice for coves, under cabinets, display cases and more.

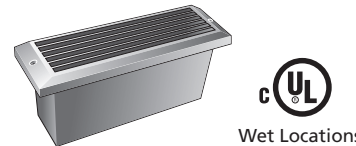
XENON WALL LIGHT



Wet Locations

Die cast aluminum fixture designed for surface or recessed applications. 120V and available in three cover designs and four colours

XENON BRICK LIGHT



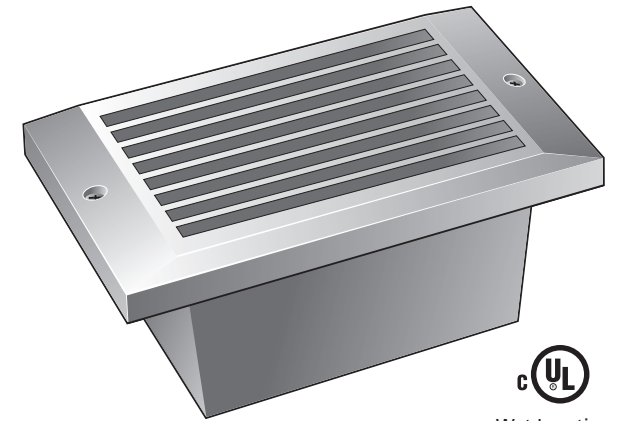
Wet Locations

Longest-lasting 120V Brick Light with aluminum die cast brick-size construction in three cover designs and four colours.

INSTALLATION INSTRUCTIONS

XENON STEP LIGHT

The Brightest,
Longest-lasting Step Light



Wet Locations

10,000-hour bulb life

*

Louvre, Scoop & Prism cover designs

*

White, Bronze, Black and
Brushed Aluminum colours

*

Die cast aluminum design suitable
for concrete pour

*

cUL Listed for wet locations

MAGIC LITE
YOUR TRUSTED LIGHTING PARTNER