

# INSTALLATION INSTRUCTIONS

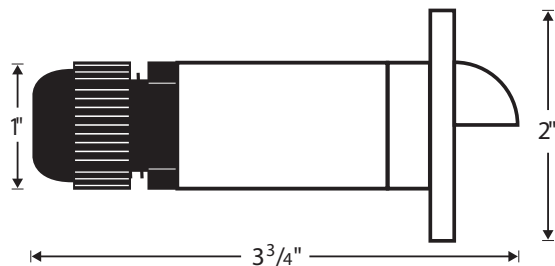
# LED MINIDISC SCOOP LIGHT

- For all exterior to a wall or burial applications, use only CSA approved or equivalent 18G wire labeled "Sprinkler Wire" or "Direct Burial", Magic Lite part-number LW-18G-BUR.
- First, disconnect power from LED Driver. Wire LED MiniDisc Scoop Lights per these instructions, assure proper tightness on all terminal blocks, strain reliefs, and MiniDisc Light covers, and then apply 120VAC power to LED Driver.
  - Do not try to adjust, fix, rewire, LED module. In the unlikely event LED module does not illuminate, check wiring polarity and terminal block first. If this does not work, send LED module back for warranty replacement, if applicable.

NOTE: These products may represent a possible shock or fire hazard if improperly installed or attached in any way. Products should be installed in accordance with the owner's manual, current local codes, and/or the current Canadian Electrical Code. Use 2 LED Driver, Model LEDDR-12-60W. This driver will work from 1 fixture to 200 fixtures.

## SPECIFICATIONS

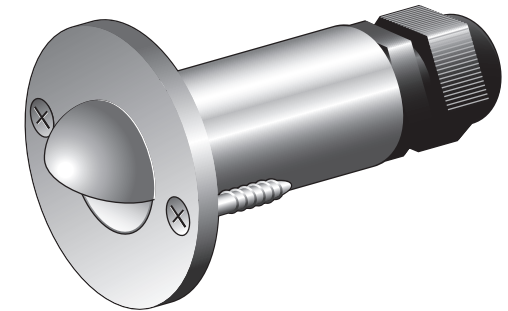
Approvals:	ETL listed for wet and burial applications
Electrical Rating Per MiniDisc Scoop Light:	0.24 watts, 20mA, 12VDC
Average LED Life:	50,000 hours, 70% initial lumen output
Finish Options:	Natural Aluminum, Black, White, Bronze
Lens:	Frosted



NOTE: It is not recommended to install Mini Disc Lights Scoop in harsh environments (such as limestone, salted areas, coastal environments, etc.) to avoid the risk of corrosion to the body of the fixture.

Following is list of approved dimmers for use with our dimmable drivers.

Lutron Ariadni Dimmer			
AYLV-603P	AYLV-603P-CSA	AYLV-603P-S	AYLV-600P
AYLV-600P-CSA	AYLV-600P-S		
Lutron Vareo Dimmer			
V-1000	V-600	V-1000-S	V-600-S
VETN-1000	VETS-1000	VETS-1000-CSA	VETN-1000-S
VETS-1000-S	VETS-R	VETS-R-S	VETS-1000-SL
VETS-1000-SL-S	VETS-A-SL	VETS-A-SL-S	
Lutron Nova Dimmer			
NTLV-1000	NTLV-1500	NTLV-600	NTLV-1500-S
NTLV-600-S	NTLV-1000-S	NTLV-1503P	NTLV-2003P
NTLV-1003P	NTLV-603P	NTLV-1503P-CSA	NTLV-1003P-CSA
NTLV-603P-CSA	NTLV-1503P-S	NTLV-2003P-S	NTLV-1003P-S
NTLV-603P-S	NT-3PS	NT-3PS-CSA	NT-3PS-S
NT-4PS	NT-4PS-CSA	NT-4PS-S	NT-1PS
NT-1PS-CSA	NT-1PS-S		
Lutron Ceana Dimmer			
CNLV-603P	CNLV-600P		
Lutron Diva Dimmer			
DVLV-103P	DVLV-603P	DVSVCLV-103P	DVSVCLV-603P
DVLV-103P-CSA	DVLV-603P-CSA	DVLV-103P-S	DVLV-603P-S
DVLV-103PH-S	DVLV-603PH-S	DVSVCLV-103P-L	DVSVCLV-603P-L
DVLV-600P	DVLV-10P	DVSVCLV-10P	DVSVCLV-600P
DVLV-10P-CSA	DVLV-10P-S	DVLV-10PH-S	DVSVCLV-10P-L
SC-3PS	SC-3PS	SC-4PS	SC-4PS
SC-1PS	SC-1PS	SC-3PSNL	SC-4PSNL
SC-1PSNL			
Lutron Glyder Dimmer			
GLV-600	GLV-600-CSA		
Lutron Lyneo Dimmer			
LXLV-103PL	LXLV-603PL	LXLV-10PL	LXLV-600PL
Lutron Nova T Dimmer			
NTLV-1500	NTLV-1000	NTLV-1000-277	NTLV-600
NTLV-600-277			
Lutron Skylark Dimmer			
SLV-603P	SLV-603P-CSA	SLV-603PH-CSA	SLV-600P
SLV-600P-CSA	SLV-600PH-CSA		
Leviton Illumatech Dimmer			
IPM06-1LZ	IPM06-1LX	IPM10-1LZ	
Leviton Mural Dimmer			
MDM06-1LI	MDM06-1LW	MDM06-1LA	MDM10-1LI
MDM10-1LW	MDM10-1LA		
Leviton SureSlide Dimmer			
6613-PLT	6613-PLI	6613-PLW	6613-PLA
Leviton ToggleTouch Dimmer			
TGM10-1LI	TGM10-1LI	TGM10-1LA	TGM10-1LT
Leviton Vizia Dimmer			
VPM06-1LZ			

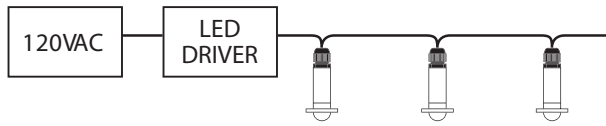


## APPLICATIONS

- Steps
- Aisles
- Paths
- Direction Lighting
- Information Lighting
- Decorative Lighting
- Merchandising
- Landscape Accents

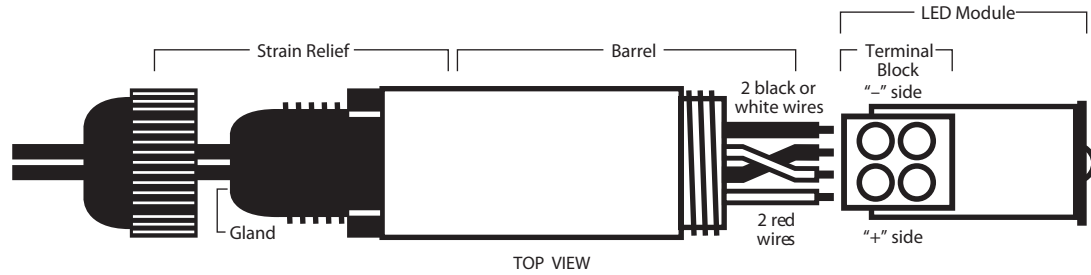
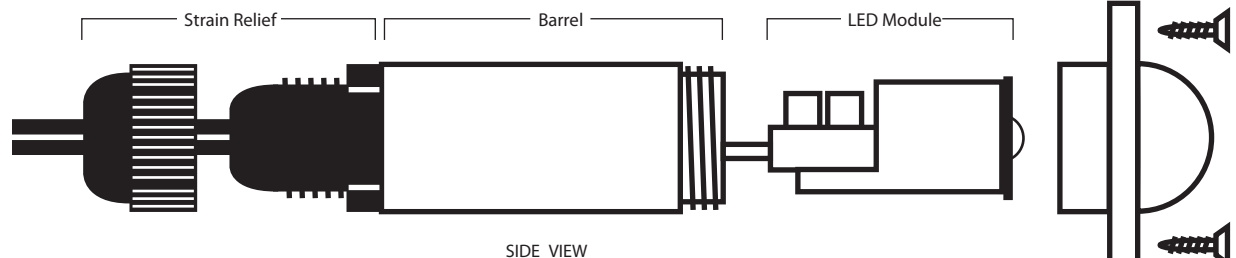


## INSTALLATION



Determine where you wish the LED MiniDisc Scoop Light to be placed.

1. Drill a 1.0" (2.54cm) diameter hole into mounting surface. LED MiniDisc Scoop Lights will require a hole of at least 3-1/2" (8.89cm) long x 1.0" (2.54cm) diameter. Note that an 18 gauge wire will also have to pass from LED Driver to all LED MiniDisc Scoop Lights. Note: For concrete pour applications, we recommend the use of our concrete form, Magic Lite Part # LEDMD-CF
2. Place LED MiniDisc Scoop Lights loosely into holes, do not mount at this time.
3. Locate Driver adjacent to 120VAC power supply. Remember to adhere to max and min number of fixtures per driver being used as per #1 under Warnings in these instructions. Leave LED Driver unattached to 120V power at this time.
4. Use only 18G wire of the following specifications
  - For all applications with wire interior to a wall, use only CSA approved or equivalent 18G wire labeled "CL2", Magic Lite part number LW-18G-CL2.
  - For all exterior to a wall or burial applications, use only CSA approved or equivalent 18G wire labeled "Sprinkler Wire" or "Direct Burial", Magic Lite part number LW-18G-BUR.
5. Disassemble LED MiniDisc Scoop Light per diagram below. Bring power wire from LED Driver to LED MiniDisc Scoop Lights and strip insulation off of the wire leaving 3/8" (0.95cm) of bare copper wire.



6. Bring both the incoming power wire, and the outgoing power wire, into the LED MiniDisc Scoop Light strain relief by pushing each through the respective hole in strain relief rubber gland. If you encounter difficulty inserting wire into the gland, apply a small amount of Vaseline on the outside of the wire. Once through the strain relief gland separate the incoming and outgoing power wires into two sets of black or white and two sets of red wires. See diagram above.
7. Note polarity in terminal block. Attach both black wires to the "-" side. Attach both red wires to the "+" side. Tighten terminal block screws. See diagram above.
8. Pull wires and LED module into LED MiniDisc Scoop Light barrel until LED module is flush with top of barrel. Screw on cover firmly. Tighten strain relief nut firmly.
9. On the last LED MiniDisc Scoop Light in the run, you will only have one incoming power wire, no outgoing power wire. On this LED MiniDisc Scoop Light place the incoming power wire through one hole in the strain relief, and in the other hole place acrylic rod included with this instruction sheet.
10. Bring power wire from first LED MiniDisc Scoop Light through a proper strain relief, and into the LED Driver. Note polarity. Place black or white power wire into "-" side, and red power wire into "+" side of LED Driver output.
11. Assure all connections and strain reliefs are firmly tightened, cover is tight on LED Driver, and then hard-wire LED Driver to 120VAC.

**VERY IMPORTANT!** To properly tighten the black plastic strain relief nut, first tighten firmly with your hand, then tighten an additional one-half turn with a 7/8" open end wrench.

12. LED MiniDisc Scoop Light will illuminate in about 3 seconds. If all do not illuminate, check connections and polarity at the LED Driver. If one does not illuminate, check connections and polarity at the unlit LED MiniDisc Scoop Light.
13. With system working properly, attach LED MiniDisc Scoop Lights to mounting surface by securing mounting screws provided through LED MiniDisc Scoop Light cover and into mounting surface.

## WARNING

TO REDUCE THE RISK OF FIRE, ELECTRICAL SHOCK, OR INJURY TO PERSONS:

1. Use only with Magic Lite Ltd's approved drivers listed for use with LED Mini Disc Light. Do Not exceed maximum number of fixtures recommended per driver. Note that dimmable drivers have a minimum load requirement. Do not put less than the minimum load on any dimmable driver.

**Indoor, Non-dimmable**  
LEDDR-12-20W-HW Max 75 LEDMD

**Outdoor, Non-dimmable**  
LEDDR-12-60W Max 200 LEDMD

**Outdoor, Dimmable**  
MLDRE-20-12-DM, Min 34 LEDMD, Max 75 LEDMD  
MLDRE-60-12-DM, Min 34 LEDMD, Max 200 LEDMD

2. Parallel wire LED MiniDisc Scoop Lights to LED Driver.
3. Use only 18G wire of the following specifications:
  - For all applications with wire interior to a wall, use only CSA approved or equivalent 18G wire labeled "CL2", Magic Lite part number LW-18G-CL2.