

WARNING!

TO REDUCE THE RISK OF FIRE, ELECTRIC SHOCK OR INJURY TO PERSONS:

1. Turn off / unplug before replacing LED Module or installing fixtures or power supplies.
 2. Do not touch LED module when fixture is lit.
 3. Do not look directly at lighted LED module.
 4. Do not recess fixture into blind hole.
 5. Parallel wire LED Mini Star II fixtures to LED power supply only.
 6. Use only with 24V, 18 Watt power supply and harness provided with this kit.
- Note: In-rush current protection devices inherent in LED drivers can cause lights to flash on and off when switched on. To avoid this, we recommend no more than 3 LED Mini Stars be connected to the 18 watt driver provided with this kit.
7. Install in accordance with Magic Lite instructions, current local codes and / or the Canadian Electric Code.

8. Tools needed to install:

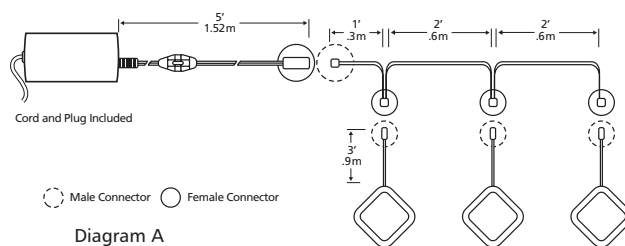
- Small Phillips screwdriver
- Small flat head screwdriver

9. Parts Included With Kit:

- 3 X LED Mini Star II Lights complete with frosted lens, 36" (92cm) lead and connector
- double sided tape for glass or metal surfaces
- 6 mounting screws for wooden surfaces
- Wiring harness and 18Watt plug in power supply
- 12 wire mounting clips
- Mounting Instructions

MOUNTING INSTRUCTIONS

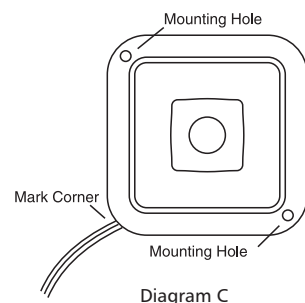
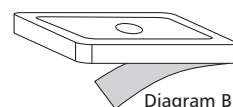
1. Remove all parts from the kit and check to assure correct amounts included.
2. Determine LED Mini Star II locations. Note length of leads as per diagram A when determining location of lights.



3. Determine location of plug in power supply. The power supply plugs directly into 120 Volt wall receptacle and comes with a 5' (1.52M) cord and plug.
4. Install fixtures as per following two options:

A. Double Sided Tape

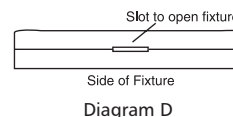
1. Clean mounting surface
2. If running wires inside cabinet, mark fixture location with pencil and mark outside corner of fixture where wires come out of fixture. Drill a small hole on mounting surface (approx 1/2" (1.3cm)) just inside the marked corner edge of fixture to allow fixture wires to pass through surface. (see diagram C)



3. Remove paper backing on double sided tape. (see diagram B)
4. Firmly apply fixture to mounting surface.

B. Wood Screws:

1. Clean mounting surface
2. If running wires inside cabinet, mark mounting holes with pencil and mark outside corner of fixture where wires come out of fixture. Drill a small hole on mounting surface (approx 1/2" (1.3cm)) just inside the marked corner edge of fixture to allow fixture wires to pass through surface. (see diagram C)
3. Remove cover from LED Mini Star II using a slotted screw driver to gently pry open fixture at slot on side of fixture. (see diagram D)



4. Position fixture in desired location and attach fixture to mounting surface using two wood screws included.

Note: If you elect not to mount wires inside cabinet, you do not have to drill holes as described above. Use wire mounting clips enclosed to secure wire harness to underside of cabinet.

5. Connect fixtures to wiring harness by plugging in quick connect from fixture to quick connect on harness. (see diagram A)
6. Check that all connections are secure, then plug in power supply and turn switch on.

RE-LAMPING MODULE

In the unlikely event of an LED module failure, please follow the instructions below.

Caution: If unit has recently been operating, glass, LED module and fixture can be hot. Turn off fixture and allow to cool for 15 minutes before relamping.

Caution: Always replace LED module with power supply switch in OFF position.

Note: Using a thin pair of gloves during this procedure will eliminate finger prints on glass lens and LED modules.

1. With a small screw driver, use slot in cover to remove cover from base. (see drawing C)
2. With a pair of needle nosed pliers, remove module connector from printed circuit board.
3. Unscrew old LED module. Replace with new LED module (Magic Lite Part number LEDMOD-24-LP). Tighten screws just snug.
4. Push male connector from LED module into female connector in printed circuit board.
5. Replace cover by aligning slot in cover with slot in base. Press firmly together.

IMPORTANT SAFETY INSTRUCTIONS:

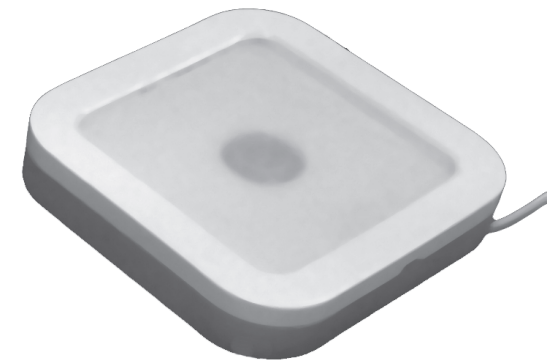
1. Save these instructions
2. Read all instructions thoroughly before commencing assembly or installation.
3. This product must be installed in accordance with the applicable installation code by a person familiar with the construction and operation of the product and the hazards involved.
4. Only use Class 2 power supplies approved as part of this system.
5. For indoor use only.
6. Turn off all electrical power before modifying lighting system in any way.
7. Caution: No single circuit shall exceed 90 watts. Magic Lite Ltd. warranty of product is conditioned upon use of Magic Lite supplied cUL drivers as required under the Canadian Electrical Code.

SPECIFICATIONS

Dimensions:	75x75x13 (mm) Length x Width x Height
Operating Voltage:	24 Vdc
Power Consumption:	3 X 3.26W
Average LED lamp life:	40,000 hours, 70% initial lumen output
Product Material:	PC Cover + Aluminum Enclosure
Cover (Lens) Material:	PC frame & glass lens
Cover Colour:	BK, WH, AL & BZ
No. of LED per Fixture:	1 PCS
Mounting:	Surface mount with screws or double sided tape
Leads:	36" provided
Agency Approval:	QPS



2526 Speers Road, Unit 4-9
Oakville, Ontario, Canada L6L 5M2
Tel: 905-825-9592 • Out of Area: 1-888-945-5483
Fax: 905-825-8334
www.magiclite.com



- Ultra slim profile
-
- Replaceable LED module
-
- 6 X LG5630 LEDs
-
- Replaces 18W xenon lamp

