

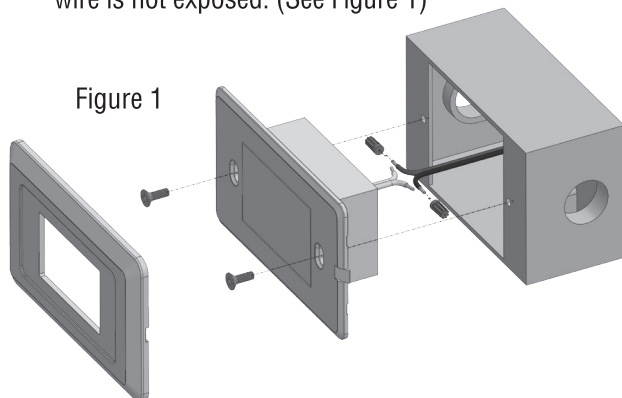
## WIRING AND MOUNTING INSTRUCTIONS

**CAUTION!** Only qualified electricians or people familiar with household electrical circuits should bring 120VAC power to the fixture. Wiring may require an inspection by local authorities building department. Check with your local building department before installation.

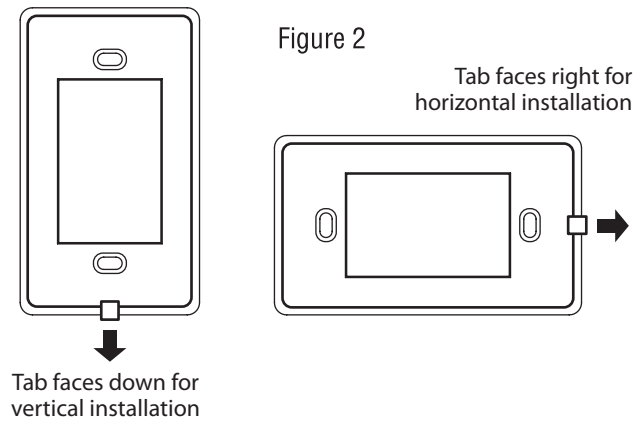
**CAUTION!** Before bringing 120VAC power to the fixture, make sure incoming wire is not “hot” and all power coming to the wire is off.

**CAUTION!** All connections must be made in accordance with this instruction manual, current NEC / CEC and all local building codes. Minimum 90C supply conductors.

1. LED Switch Star mounts to a standard (indoor or outdoor) 2” x 4” junction (switch) box with mounting screws provided. Suitable for raceway supported boxes.
2. Do not mount LED Switch Star to a box that contains telephone, data or TV antenna circuits.
3. Strip 1/3” (8mm) of the insulation off each incoming 120VAC power wire. Connect white incoming 120VAC wire (neutral wire) to one of the wires from the fixture and secure with wire nut provided. Connect black incoming 120VAC wire to the other wire from the fixture and secure with wire nut provided. The electrical box you are mounting to should have ground connection to it. Thread all wires firmly down into wire nuts, so that uninsulated wire is not exposed. (See Figure 1)

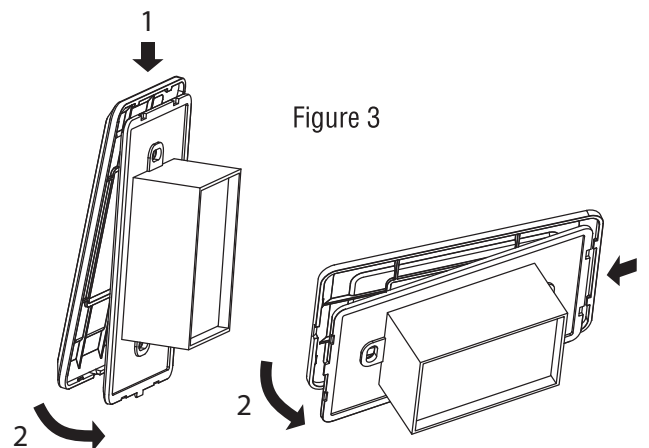


4. Mount fixture to box with 2 mounting screws provided. See Figure 2 for mounting and orientation note on fixture. Fixture must be mounted with protruding tab facing down for vertical orientation or to the right for horizontal orientation.



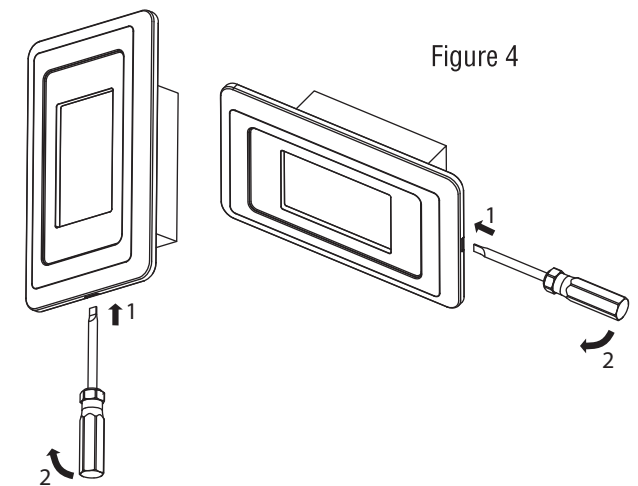
**IMPORTANT:** For outdoor installations, be sure to use silicone in screw holes to assure a water tight seal.

5. Place cover plate over fixture by placing two small tabs at top (or left side) of cover plate into slots of fixture first. Then gently push opposite side of cover with recessed tab into fixture until cover snaps into place. **Failure to follow this sequence will cause tabs on cover plate to break!** (See Figure 3)



Be sure to use appropriate horizontal or vertical cover plate depending on the orientation of your fixture.

Should you ever need to remove your cover plate, remove it in the opposite sequence using a small screw driver to pry the cover off the fixture at the tab which will be located at the right (horizontal) or bottom (vertical) of fixture depending on orientation of fixture. (See Figure 4)



6. For outdoor installations use appropriate silicone sealant to seal around fixture and wall.

## LED SWITCH STAR DIMMING

LED Switch Star is dimmable to about 5% with most standard dimmers.

