

# Disc Light

Versatile and robust, the LED Disc Light offers powerful illumination for both public and residential areas, whether indoors or outdoors. Durable and certified for wet conditions, it's great for enhancing decks, driveways, and patios with simple concrete pour setup.



## FEATURES

- Fully dimmable with dimmable power supply (sold separately)
- 50,000-Hour LED life
- Low power consumption: 3 watts per fixture
- Safe 12 volt, Class 2 power supply (not included)
- Up to 30 fixtures per power supply
- Lens: Frosted or clear tempered glass
- cETLus listed
- Fits 1.5" diameter hole
- No UV, no infrared, no radiated heat
- 3 years warranty

## APPLICATIONS

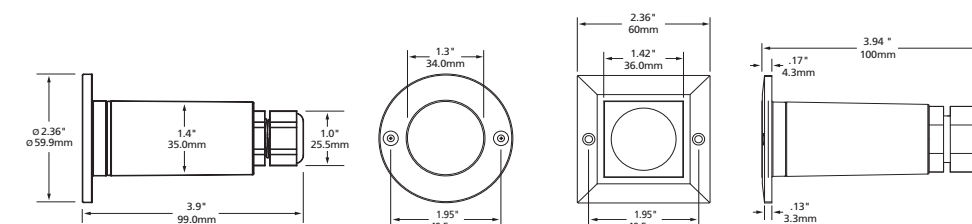
- Steps
- Aisles
- Paths
- Driveways
- Direction lighting
- Information lighting
- Decorative lighting
- Merchandising
- Landscape accents

## SPECIFICATIONS

Product Code	LEDD-Y-XX (ROUND)	LEDD-Y-XX-SQ (SQUARE)
<b>Electrical</b>	12V AC	
<b>Input Voltage</b>	12V AC	
<b>Power Consumption</b>	3W	
<b>Specs</b>	Cool White 98 lumens @ 5400K; Warm White 95 lumens @ 2900K	
<b>Colour Temperature</b>	Cool White 98 lumens @ 5400K; Warm White 95 lumens @ 2900K	
<b>CRI</b>	80+	
<b>Lumen Output</b>	900LM Max.	
<b>Efficacy (LM/W)</b>	83	
<b>Dimmable</b>	Yes	
<b>Beam Angle</b>	N/A	
<b>LED</b>	5050	
<b>Type</b>	5050	
<b>Life Span</b>	50,000 Hours	
<b>Design</b>	Stainless steel	
<b>Dimensions (Inches)</b>	2.36 x 3.9"	2.36 x 3.94"
<b>Dimensions (Millimeters)</b>	60 x 99mm	60 x 100mm
<b>Cover Finish</b>	Stainless steel	
<b>Barrel Finish</b>	Stainless steel	
<b>Max Single Run Length</b>	18 fixtures	
<b>Approved Location</b>	Outdoor	
<b>Mounting</b>	Recessed	
<b>Warranty</b>	3 years	
<b>Approvals</b>	cETLus listed and labeled for wet, IC, ceiling, wall and direct burial applications	

**NOTE:** When installing Mini Disc Lights in harsh environments (such as limestone, salted areas, coastal environments, etc.) please use the stainless steel version to avoid the risk of corrosion to the body of the fixture.

## DIAGRAM



## PRODUCT CODES

### ROUND

#### LEDD-Y-XX

LED Disc Light	TEMPERED GLASS	COLOUR OF LED
F - Frosted	WH - 5500K	AM - Amber
C - Clear	WW - 2700K	

### SQUARE

#### LEDD-Y-XX-SQ

LED Disc Light	TEMPERED GLASS	COLOUR OF LED
F - Frosted	WH - 5500K	AM - Amber
C - Clear	WW - 2700K	

## REPLACEMENT LED MODULES

- LEDD-MOD-WH**  
LED Disc Light module, 12V, white LED 5500K
- LEDD-MOD-WW**  
LED Disc Light module, 12V, warm white LED 2700K

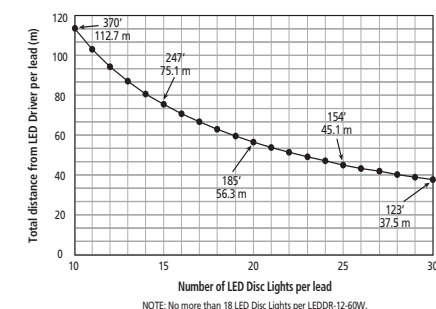
## INSTALLATION WIRES

- LW-18G-BUR**  
For outdoor burial connections
- LW-18G-CL2**  
For indoor through wall connections

**NOTE:** One of the above wires **MUST** be used in order to maintain product warranty.

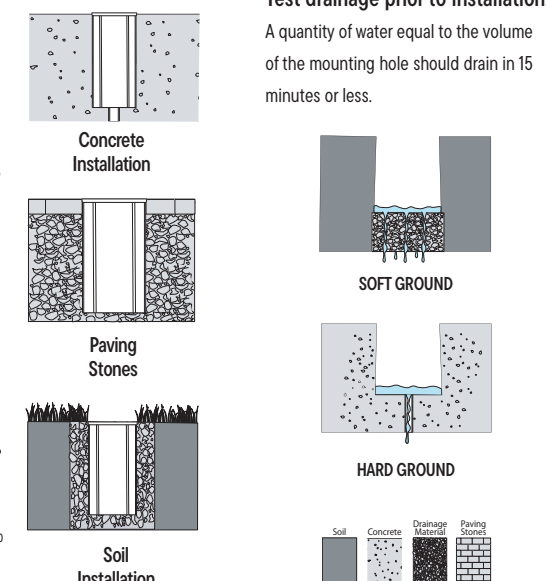
## 100% LED Light Output Chart

With every foot of lead wire and every light fixture, there is voltage loss. With too much voltage loss all light fixtures will not develop 100% of their potential output. Below is a chart of acceptable voltage loss which will maintain 100% of the potential light output of the LED Disc Light. Simply plot the number of LED Disc Light you wish to place on one lead on the horizontal axis, with the total distance from the LED Driver to the last LED Disc Light on the vertical axis. If the resulting plot is at or below the line shown, you will have acceptable voltage loss and your LED Disc Light will output 100% of their potential.



## WARNING: LACK OF DRAINAGE WILL VOID THE WARRANTY

To maintain the warranty, a proper drainage system **MUST** be installed (drainage material or drainage pipe), when the product is installed in soil or concrete.



### Test drainage prior to installation.

A quantity of water equal to the volume of the mounting hole should drain in 15 minutes or less.

## ACCESSORIES



### LEDD-CF

LED Disc Light concrete form for concrete pour applications. Fits over most 3/4" conduit junction boxes.

### LEDD-CF-SQ

LED Disc Light Square concrete form for concrete pour applications. Fits over most 3/4" conduit junction boxes.

## DIMMABLE DRIVERS

### MLDRE-20-12-DM

20 Watts  
Max. recommended load 18 W or 6 LED Disc Lights  
Min. recommended load 8 W or 3 LED Disc Lights  
6.77" x 2.67" x 1.26" (171 x 68 x 32mm)

### MLDRE-60-12-DM

60 Watts  
Max. recommended load 54 W or 18 LED Disc Lights  
Min. recommended load 8 W or 3 LED Disc Lights  
6.77" x 2.67" x 1.26" (171 x 68 x 32mm)

## NON DIMMABLE DRIVERS

### LEDDR-12-20W-HW (Indoor)

20W hardwire  
Input: 100 - 240V AC; Output: 12V DC  
Max. 6 LED Disc Lights  
4 1/8" x 4 1/8" x 1 1/2" (104.8 x 104.8 x 38.1mm)

### LEDDR-12-60W (Indoor/Outdoor)

60W hardwire  
Input: 100 - 240V AC; Output: 12V DC  
Max. 18 LED Disc Lights  
9 11/16" x 2 9/16" x 2 1/16" (246 x 65 x 52mm)