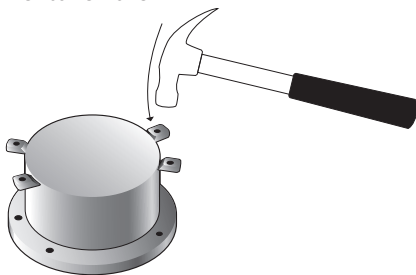


SURFACE MOUNTING INSTRUCTIONS

1. First remove cover by unscrewing four bolts holding cover to the can.
2. Remove Xenon bulb by pulling bulb directly outward from bulb socket.
3. Place all parts in a secure location until reassembly.
4. Select a mounting location for the Xenon Wall Light. Fixture should be within reach of 120V power, located approximately 9 inches above the surface to be lit, and situated at the best location along the mounting surface for the illumination task.
5. Xenon Wall Light has four surface mounting brackets that will allow the can to be securely affixed to almost any surface with the four mounting screws provided. Installations in drywall will require proper wall anchors. Place can onto the mounting surface and mark the position of the four mounting screws. For wiring to the immediate back of Xenon Wall Light, mark hole for incoming wire. Remove can and drill pilot holes for screws and wire. Reposition can, and securely fasten the can to the mounting surface by firmly tightening four mounting screws.

RECESSED MOUNTING INSTRUCTIONS

1. First remove cover by unscrewing four bolts holding cover to the can.
2. Remove Xenon bulb by pulling bulb directly outward from bulb socket.
3. Place all parts in a secure location until reassembly.
4. Place Xenon Wall Light upside-down on a towel (soft surface) and strike four surface mounting brackets with a hammer to remove.



5. Select a mounting location for the Xenon Wall Light. Fixture should be within reach of 120V power, located approximately 9 inches above the surface to be lit, and situated at the best location along the mounting surface for the illumination task.

6. Xenon Wall Light has flanges that will allow the can to be securely affixed to almost any surface with the four mounting screws provided. Installations in drywall will require a wood backing behind drywall. Place can in a round hole of 5" diameter and mark the position of the four mounting screws. Remove can and drill pilot holes for the screws. Reposition can in hole and securely fasten the can to the mounting surface by firmly tightening four mounting screws.

Important: It is recommended that you use Magic Lite's Concrete Cap (WL-CC) for concrete pour installations. These caps assist in providing a proper reveal for flush mount of fixture cover after concrete is dry.

WIRING INSTRUCTIONS

CAUTION! Only qualified electricians, or people familiar with household electrical circuits, should bring 120V power to the fixture. Wiring may require an inspection by the local building department. Check with your local building department before installation.

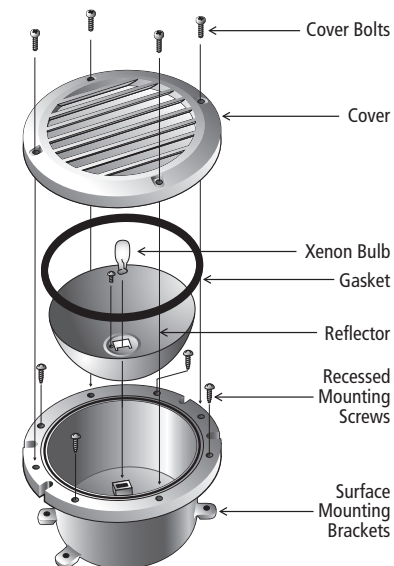
CAUTION! Before bringing 120V power to the fixture, make sure incoming wire is not "hot" and all power coming to the wire is off.

CAUTION! All connections must be made in accordance with this instruction manual, current Canadian Electrical Code, and all local building codes. Minimum 90°C supply conductors.

CAUTION! Use RTV silicone and water-tight fittings on all connections to fixture.

1. Remove reflector by unscrewing one bolt at bottom of reflector, and gently lifting reflector and bulb socket out of the can.
2. Through one of the two NPT fittings provided, bring in 120V power wiring. If 120V wire will not conveniently enter one of the two NPT fittings provided, simply unscrew the can, rotate can 180 degrees, and reinstall. Can is entirely symmetrical, and 180 degree rotation will not affect mounting holes.
3. Secure wire to fixture with the appropriate strain relief (not provided).
4. Strip 1/3" (8mm) of the insulation off each incoming 120V power wire. Connect white incoming 120V wire (neutral wire) to push-in connector on white wire from transformer. Connect black incoming 120V wire to push-in connector on black wire from transformer. Connect ground wire to push-in connector on green wire screwed into can. Push all wires firmly down into connectors, so that uninsulated wire is not exposed.

5. Reinstall reflector, bulb and cover.

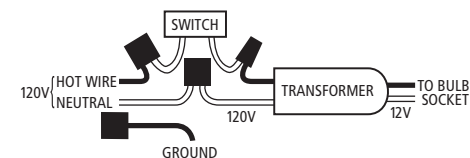


RELAMPING

CAUTION! If Xenon Wall Light has recently been operating, glass lens, bulb and fixture are HOT! Turn Off fixture and allow unit to cool for 15 minutes.

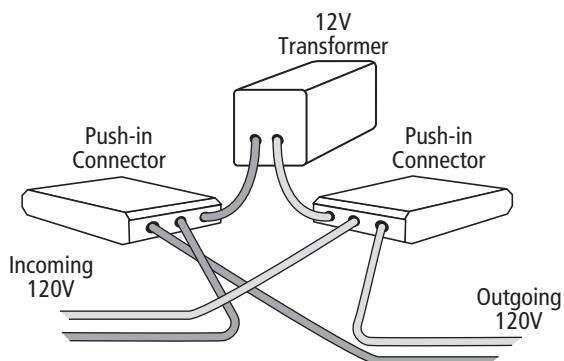
CAUTION! Always make sure there is NO power coming to the fixture, or 120V power wiring, before relamping!

1. Remove cover by unscrewing four bolts holding can to cover.
2. Remove Xenon bulb by pulling directly outward from the bulb socket.
3. Replace with an 18 watt, 12 volt, wedge base Xenon bulb only (Magic Lite Ltd. model number XTL-BULB). Push bulb directly into socket until bulb base is firmly seated.
4. Make sure gasket is properly in place on top of can. Place cover on can with Louvre or Scoop openings pointing toward the illumination surface. Secure cover to can by reinstalling the four screw bolts provided.
5. Re-energize the 120V to the fixture. If bulb does not light, check for a loose bulb in socket by repeating steps #1 through #4 above. If bulb still does not light, retry steps #1 through #4 above with a new Xenon bulb.



THROUGH-WIRE, 120V POWER

- Disconnect from all 120V power prior to installation.
- Connections must be made in accordance with all local electric codes and/or Canadian Electrical Code.
- Minimum 90°C supply conductors.
- Interconnect up to 1188 Watts (66 bulbs).
- 14 gauge (Romex Type) or better wire is required.
- Requires strain reliefs.
- Use RTV silicone and water-tight fittings on all connections to fixtures.



2526 Speers Road, Unit 4-9
Oakville, Ontario, Canada L6L 5M2

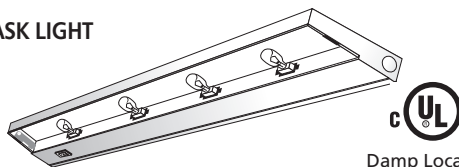
Tel: 905-825-9592 • Out of Area: 1-888-945-5483 • Fax: 905-825-8334

www.magiclite.com

MLI017V3-1114

OTHER XENON PRODUCTS BY MAGIC LITE

XENON TASK LIGHT



Damp Locations

The perfect under-cabinet task light fixture. Brighter than fluorescent, a fraction the heat of halogen, and four times the bulb life of halogen.

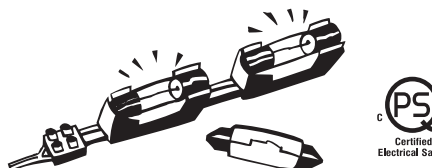
XENON MINI LIGHT



ETL
Intertek

A completely new design of the industry standard "hockey puck". A fraction the heat of a halogen, four times the bulb life of halogen, similar bright white light.

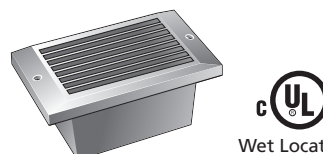
BRITESTRIP



PS
Certified
Electrical Safety

Our brightest, flexible, linear lighting system. Parallel wiring, flexibility and field cutability make Brite Strip the professional's choice for coves, under cabinets, display cases and more.

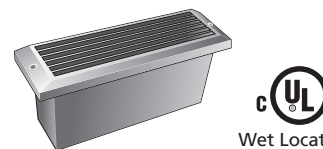
XENON STEP LIGHT



Wet Locations

The brightest, longest-lasting 120V Step Light with aluminum die cast construction in three cover designs and four colours.

XENON BRICK LIGHT



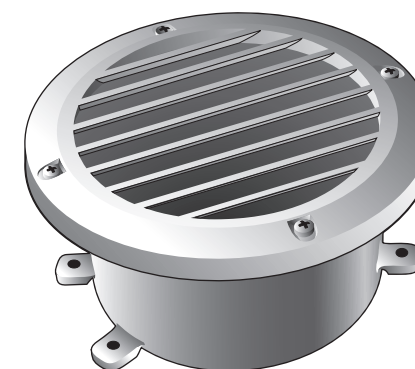
Wet Locations

Longest-lasting 120V Brick Light with aluminum die cast brick-size construction in three cover designs and four colours.

INSTALLATION INSTRUCTIONS

XENON WALL LIGHT

Long-lasting Xenon technology
in a round die cast
aluminum fixture



Designed for Surface or Recessed Applications

• 10,000-hour bulb life

• Louvre, Scoop & Prism cover designs

• White, Bronze, Black and Aluminum colours

• Die cast aluminum design suitable
for concrete pour

• cUL Listed for wet locations
and insulated ceiling installations

• 120V Input



cUL
Wet Locations